

South Dakota
SIMMENTELLER & **SIMMENTAL SCENE**
North Dakota

JANUARY 2024



The Seventh Annual
CK CATTLE & WAGER CATTLE
PRODUCTION SALE

SATURDAY | FEBRUARY 10, 2024 | 3:00 PM

Highmore, South Dakota



CKCC LINCOLN 0631H ET

Lincoln progeny continues to impress as they mature. They come easy and offer breed leading growth! Once again, his progeny will highlight the sale!



ES RIGHT TIME FA110-4

The influence of Right Time needs no introduction! He is the "fix all" sire to inject performance, carcass merit, and maternal excellence! One of the most consistent sires that we have ever used... and the proof is in the progeny!



FRKG CKCC PLATINUM 009H ET

Sons by the \$175,000 Platinum will sell on February 10, 2024. Unmatched consistency, performance, and real world function, with a first class look!



DEER VALLEY GROWTH FUND

A large selection of SimAngus™ bulls by Growth Fund will be offered. We love the consistency and doability that this set of brothers offer. Hybrid vigor is all-inclusive!



FRKG CKCC UNDISPUTED 005H ET

Homozygous black & polled full brother to Platinum that sires more growth, length, and shape. Undisputed has sired a set of bulls that will turn heads on February 10! We love the genuine shape and performance that this sire group represents!



WAGR PATRIOT 1008J

A past sale feature that was selected by Wagonhammer Ranches, WAGR Patriot 1008J has evolved as one of the most elite sons of Hook's Eagle SE in the business. He ranks top 1% REA, TI; top 2% YW, ADG, CW; top 3% WW; top 10% CE, BW, Dec, API; top 15% Marb. Real world cattle with real world functionality!



MUSGRAVE 316 STUNNER

Elite growth, power, and real world performance can be identified by this sire group. The daughters of Stunner are making absolutely picture perfect females in production! This is a sire group that you can hang your hat on!

100+ BULLS
50+ BRED HEIFERS
 Featuring a powerful offering of
 Simmental & SimAngus™ Seedstock



CKEFFLING.COM
DVAuction



CHRIS & KRISTI EFFLING
 Cagney, Chesney, & Kenidey
 Chris: 605.769.0142
 Kristi: 605.769.1308



LANNY & JAYNE WAGER
 Dusty & Aimee Wager
 Lanny: 605.769.1211
 Dusty: 605.769.5010



Sale Management by
INNOVATION
 AgMarketing, LLC
 Jered Shipman: (806) 983-7226
 Graham Blagg: (530) 913-6418
 Tim Anderson: (605) 682-9343
 innovationagmarketing.com



www.NorthDakotaSimmental.com

Davis Kinn, Turtle Lake President
(701) 400-5108 dkinn10@hotmail.com

Jason Quandt, Oakes Vice President
(701) 710-0080 jason@quandtbrothers.com

Bryan Leapalddt, Leeds Director
(701) 739-8764 bleapalddt@gmail.com

Kelly Hanson, Hannaford Director
(701) 789-1391 kelly.hanson@centralplainsag.net

Kim Myers, Kathryn Secretary/Treasurer
(701) 308-1018 gkmyers@outlook.com

Wyatt Hansen, Ryder Director
(701) 720-4850 wyattnhansen@gmail.com

Lyndon Hoiby, McGregor Director
(701) 641-1083 hoibysim@nccray.com

Ethan Steffan, Killdeer Director
(701) 290-0371 ethansteffan@gmail.com

Derek Sys, Douglas Director
(701) 509-5870 dj.sys@hotmail.com

Levi Elliot, Galesburg Director
(701) 430-0661 cattle.elliott@gmail.com



www.SouthDakotaSimmental.com

Chris Effling, Highmore President
(605) 769-0142 .. ckeffling@venturecomm.net

Bridget Twedt, Beresford .. Vice President
(605) 777-5404 bridget.twedt@k12.sd.us

Kevin Blagg, Salem Treasurer
(605) 240-0015 kblagg@firstdakota.com

Colton Buus, Canova Secretary
(605) 214-3532 colton.buus@gmail.com

Harley Cable, Pukwana Director
(605) 680-0845 hdcable@midstatesd.net

Brett Tostenson, Highmore Director
(320) 226-3915 blacksandranch@gmail.com

Clay Duxbury, Miller Director
(605) 461-1494 jackpotcattle@yahoo.com

Mike Thyen, Hayti Director
(605) 520-0575 tbirdlab@itctel.com

South Dakota SIMMENTEL & North Dakota SIMMENTAL SCENE

Editor Tamra Heins, New Salem, ND
(701) 391-6431 · tamra@strategicconcepts.biz

Design Sheyna Strommen, Solen, ND
(701) 290-3886 · strommen@westriv.com

The following terms and conditions have been agreed on by the North Dakota & South Dakota Simmental Association's Board of Directors and the Publication Committee:

Advertising Space Rates

Size	4C
Full Page:	\$675
1/2	\$475
1/4 Page	\$275

Advertising Deadlines

Issue	Deadline
January, 2024	Dec. 15, 2023
February, 2024	Jan. 15, 2024
November, 2024	Oct. 15, 2024

Terms: All advertising accounts are due and payable as invoiced. Interest charges of 1% per month will be assessed to accounts that are 30 days past due.

Delinquent Advertiser's Account: Advertisers knowingly and expressly agree and consent that, whenever accounts receivable for an advertiser have not been paid as of 90 days from date involved, advertising privileges will be suspended until full payment has been received.

Copy Changes: Alterations in advertising copy, if requested after closing dates, will be permitted only if time allows.

The North Dakota and South Dakota Simmental Associations and this publication reserve the right to refuse any advertising copy at our sole discretion. The North Dakota and South Dakota Simmental Associations and this publication assume no responsibility for the accuracy of the advertising content submitted. Advertisers assume all responsibility for the accuracy and truthfulness of submitted advertising containing pedigrees or statements regarding performance.

Editorial Content: Opinions expressed are those of the writer and not necessarily those of the North Dakota and South Dakota Simmental Associations or of this publication. Photographs and manuscripts are welcome, but no responsibility is assumed either while in transit or while in this office.

About the Cover: Photo captured by Terry Ellingson of Ellingson Simmentals, Dahlen, ND

It's the most Wonderful time of the year

Heins Sight...

By Tamra Heins, Editor

Let's hope the
roads *stay clear*,
the prices **STAY**
HIGH and the
lunch is cooked to
perfection

HAPPY NEW YEAR! While some may say Christmas is the most wonderful time of year, I think Bull Sale Season is the best. In this issue, you will see the thousands of Simmental bulls and females for sale in the upper Midwest this season. Thank you to those who invest your marketing dollars in this publication.

In this issue, my two worlds collide with the story about the Quandt Brothers.

[BULL SALE SEASON]

One of the many contracts I have is serving as the State Executive Director of the ND Pork Council. This will be my tenth year in that position. I have learned a lot about the pig business and have spent the last ten years trying to help expand that industry in North Dakota. When the Quandt family, with no pig production experience, wanted to put up four finishing barns in

southeastern North Dakota, I was ecstatic. It was exciting for me that a North Dakota farmer wanted to diversify with pigs. I knew they had Simmental cattle, but I didn't know what a diverse and interesting farm they had until I started to attend permit hearings with the Quandt family. I was impressed with the sheer number of family members that work together every day and wanted to learn more about the history of their operation and maybe their secret to keeping it together through the generations. I hope you enjoy.

The podcast series highlights The Genuine JHB podcast, if you are looking for a new one to start listening to and like variety with a lot of livestock thrown in, I think this might be the one for you.

Highlights from the ND and SD Simmental Association Annual Meetings and Banquets are always a January feature. I appreciate everyone who sacrifices their time to sit on a board for their respective industry. It's not always easy – and the pay is not too great – but thank you to those who make the time.

Good luck this sale season. Let's hope the roads stay clear, the prices stay high and the lunch is cooked to perfection.

Enjoy the Day!





DOUBLE J FARMS

Bull & Female Sale

FRIDAY, JANUARY 26, 2024 12:00 NOON • 48672 252nd Street • Garretson, SD



DJF L354

ASA #4248176 PB • Jawbreaker x True Justice
Homo Polled & Homo Black
Outcross baldy with curve bending genetics!



DJF K256

ASA #4090307 3/8 SM • Guarantee x Turning Point
Homo Polled & Homo Black
AI safe to KRJ Golden Book, due 2/12.



KRJ L3170

ASA #4248261
Purebred and Percentage red bulls sired by
Captivate, Red River & Cadillac.



KRJ L3174

ASA #4248264 PB
W/C Revolution x Daphne (Uprising)
6 full ET brothers sell!



KRJ K2171

ASA #4101565 PB
Turnpike x Daphne (Uprising)
Full sister to Dakota Outlaw, Jesse James &
Spotlight! AI safe to Falcon, due 2/12.



KRJ L398

ASA #4248220 3/4 SM • Turnpike x Makers Mark
Homo Polled & Homo Black
Eye appealing baldies with added performance.



DJF L319

ASA #4248143 5/8 SM • Arrowhead x Outlaw
Homo Polled & Homo Black
Performance from a first calf heifer.

Thank you for being our partners in success for the past 50 years! THE JULSON FAMILY



Everybody who previews the cattle
before sale day will be entered into
a drawing for the Mineral X-Feeder.
Buyers and registered bidders
will also be eligible to receive
other great prizes and additional
giveaways in honor of our
50th Annual Celebration!
See you on January 26!



SELLING 90 LOTS
SIMMENTAL, SIMANGUS™ & ANGUS
BULLS, FEMALES & GENETIC LOTS

For more information or to request a catalog... Call, text or email:
KIPP JULSON 605-351-9088 • doublejfarm@alliancecom.net
www.doublejsimmentals.com

MARKETING REPRESENTATIVES:

Justin Dikoff, DV Auction/Auctioneer 605-290-0635
Kelly Schmidt 406-599-2395 • Andrew Swanson 507-829-4133

Double J Farms

DVAuction
Broadcasting Real-Time Auctions

The genetics worth waiting for!



Thursday, **March 7, 2024**

1:00 p.m., At the Ranch, Mandan, ND

SELLING 200 HEAD

120 High-Performance Red & Black Simmental & SimAngus™ Bulls
and 80 Red & Black Simmental & SimAngus™ Heifers



KBHR L025 - Reg# (4225701) - PB SM - Homo Polled
WS JAM-PACKED 88J x KBHR J116 MS RED VELOUR
CE 15.4 BW -3.5 WW 73.8 YW 109 MCE 9.5
M 23.5 MWW 60.2 **API 180.5 TI 96.1**



KBHR L033 - Reg# (4225709) - PB SM - Homo Black - Homo Polled
GIBBS 9114G ESSENTIAL x WS MISS SUGAR C4
CE 18.7 BW -3.4 WW 95.1 YW 158.1 MCE 11.2
M 28.7 MWW 76 **API 196.8 TI 109.8**



KBHR L086 - Reg# (4225762) - PB SM - Homo Black - Homo Polled
LBRS GENESIS G69 x BAR CK MS X38 106Z
CE 14.4 BW -1.4 WW 80.8 YW 118.8 MCE 9.8
M 25.7 MWW 65.8 **API 196.7 TI 103.8**



KBHR L100 - Reg# (4225776) - 3/4 SM - Homo Black - Homo Polled
REDHILL 672X X004 231A x WS MISS SUGAR C4
CE 15.5 BW 0.3 WW 94.5 YW 152.5 MCE 9.6
M 17 MWW 64 **API 183 TI 102.1**



KBHR L108 - Reg# (4225784) - PB SM - Homo Black - Homo Polled
KBHR HONOR H060 x KBHR DEBUTANTE H113
CE 18 BW -3 WW 82.9 YW 135.7 MCE 11.3
M 28.7 MWW 69.9 **API 202.9 TI 106**



KBHR L157 - Reg# (4225833) - PB SM - Homo Polled
KBHR ALL AMERICAN G104 x WS ELECTRA E88
CE 16 BW -1.1 WW 89.1 YW 134.9 MCE 10.7
M 26 MWW 70.3 **API 168.3 TI 101.3**



Dwight, Susan & Jake Keller — Luke & Katy Keller — Tessa & Thomas Osterbauer
701-471-5215 Dwight • 701-471-1142 Luke • 701-471-5065 Jake • 701-445-7350 Home
1573 55th St., Mandan, ND 58554 • kbhr@westriv.com • www.kbhrsimental.com

EPDs as of 12/13/23

DVAuction



KBHR L022 - Reg# (4225698)

3/4 SM - Homo Black - Homo Polled
REDHILL 672X X004 231A x WS MISS SUGAR C4
CE 13.1 BW 0 WW 102.2 YW 169.3 MCE 8.1
M 17 MWW 67.9 **API 179.5 TI 104.7**



KBHR L046 - Reg# (4225722)

PB SM - Homo Black - Homo Polled
LBRS GENESIS G69 x BAR CK MS X38 106Z
CE 17.2 BW -1.9 WW 77.4 YW 112.3 MCE 11.8
M 25.7 MWW 64.1 **API 200 TI 102.1**



KBHR L105 - Reg# (4225781)

PB SM - Homo Black - Homo Polled
KBHR HONOR H060 x BAR CK MS X38 106Z
CE 17.2 BW -1.3 WW 75.1 YW 116.8 MCE 12.2
M 27.1 MWW 64.5 **API 186.5 TI 99**



KBHR L107 - Reg# (4225783)

PB SM - Homo Polled
WS JAM-PACKED 88J x KBHR J011 MS FREYA
CE 13.2 BW -1.3 WW 85.4 YW 129.3 MCE 8.3
M 25.1 MWW 67.6 **API 167.8 TI 97.3**



KBHR L166 - Reg# (4225842)

PB SM - Homo Polled
KBHR ALL AMERICAN G104 x WS ELECTRA E88
CE 14.1 BW 0.7 WW 98.9 YW 147.4 MCE 9.6
M 26 MWW 75.2 **API 155.3 TI 100.2**



KBHR L175 - Reg# (4225851)

PB SM - Homo Black - Homo Polled
LBRS GENESIS G69 x BAR CK MS X38 106Z
CE 12.4 BW 0.8 WW 89.6 YW 144.6 MCE 8.7
M 25.7 MWW 70.3 **API 188.9 TI 105.8**



KBHR L176 - Reg# (4225852)

PB SM - Homo Polled
MR SR RED OCTOBER G1761 x KBHR H074 MS ALL ABOARD
CE 18.6 BW -2 WW 87.9 YW 139.2 MCE 10.1
M 20.5 MWW 64.2 **API 177.1 TI 103.1**



KBHR L187 - Reg# (4225863)

PB SM - Homo Polled
KBHR ALL AMERICAN G104 x WS ELECTRA E88
CE 12.7 BW 2.1 WW 103.4 YW 159.8 MCE 8.5
M 26 MWW 77.5 **API 165 TI 106.4**



KBHR L202 - Reg# (4225878)

1/2 SM - Homo Polled
BIEBER CL STOCKMARKET E119 x KBHR F245
CE 16.9 BW -2.4 WW 86.3 YW 136.9 MCE 10.6
M 23.4 MWW 66.4 **API 165.1 TI 102.9**



KBHR L212 - Reg# (4225888)

PB SM - Hetero Black - Homo Polled
FIVE STAR JACKSON J10 x WS ELECTRA E88
CE 19.5 BW -5.2 WW 73.4 YW 108.4 MCE 11.9
M 27.1 MWW 63.6 **API 188.9 TI 100.3**



KBHR L214 - Reg# (4225890)

PB SM - Homo Black - Homo Polled
KBHR HARTLAND H100 x WS MISS SUGAR C4
CE 15.9 BW -2.4 WW 91.2 YW 138.4 MCE 9.6
M 30 MWW 75.4 **API 172.8 TI 103.4**



KBHR L279 - Reg# (4225955)

PB SM - Homo Polled
FIVE STAR JACKSON J10 x KBHR RED VELVET F055
CE 15 BW -0.4 WW 95.5 YW 143.3 MCE 10.6
M 28.3 MWW 75.8 **API 167.6 TI 106.5**

DIFFERENT FORMAT. SAME REPUTATION.

South Dakota SOURCE Sale

HIGHLIGHTS FROM THE SOUTH DAKOTA SIMMENTAL ASSOCIATION SALE, ANNUAL MEETING AND AWARDS BANQUET



Mobridge Livestock Market was awarded the SD Simmental Association Promoter of the Year Award. Mobridge Livestock Market, Mobridge, SD is locally owned by Jason Anderberg, Tigh Anderberg, and Casey Perman. The SD Simmental Association honored this business because of their work to promote Simmental and Simmental Influenced cattle through the years by advertising special breed sales and working with buyers to identify those genetics when they come into their sale barn. Thank you to Mobridge Livestock for your work for SD Simmental breeders.



The SD Simmental Association elected new board of directors at their Annual Meeting and Banquet. Tyrell Mitchell and Tom Harris joined the board this year. Bridgett Twedt was elected to be the new President and Kevin Blagg serves as Treasurer. Pictured, left to right, Jeremy Lehrman, Tyrell Mitchell, Kevin Blagg, Bridgett Twedt, Brett Tostenson, Tom Harris and Mike Thyen.

THYEN
Simmentals

SOLSAA
Angus

OUR FOURTH ANNUAL
PRODUCTION SALE
FEBRUARY 17TH - 1 PM

LIVE AUCTION AT THYEN SIMMENTALS

45142 183RD ST - Hayti, SD

3.5 miles West of Kones Korner

*Selling 42 Simmental,
SimAngus & Angus Bulls
& 13 Angus Open Heifers*



SOLSAA ANGUS SIRES

Sitz Barricade 632F

Drag Iron • Musgrave Jumbo

Musgrave Colossal • 784 Barricade

THYEN SIMMENTALS SIRES

Mader Walk This Way

OMF Epic • CKCC Serena's Cash

TKCC Turnpike (T-pike)

DVAuction

CONTACT US FOR MORE INFORMATION
MIKE THYEN (605) 520-0575
ERIC SOLSAA (605) 237-0984

SD Highlights, Cont'd from pg 8

The SD Simmental Association awarded two \$500 Scholarships at the Annual Awards Banquet. The recipients had to write an essay titled "Why Simmental?" This year's winners were Cassandra Twedt (pictured at right) and Kenidey Effling (not pictured).



The Fallen Friends Buckle is given to a SD Junior Simmental Association member who has excelled in many parts of the association throughout their junior career. This year's award winner is Lindsey VanderWall, Bruce, SD. Vanderwall attends South Dakota State University and is majoring in Ag Education. She has her own herd of registered Simmental and SimAngus cattle and has been active in the junior association over the years. Congratulations to Lindsey.



The SD Junior Simmental Association awarded \$500 heifer grants to nine juniors during the SD Simmental Annual Awards Banquet. The money for the grants is made possible through generous donations by Martin-Trudeau Insurance. This grant can be used to purchase any open or bred heifer offered for sale in one of the SD Simmental Association sponsored sales. Heifer grant recipients are (L to R) Cassandra Twedt, Jade Twedt, Harper Duxbury, Barret Buus, Chesney Fuks, Natalie Marshall and Aaron Haman, as well as (not pictured) Taten Twedt and Madison Dragt.

Large offerings of these top sires!

Joint Production Sale

Saturday, February 17, 2024

Hub City Livestock, Aberdeen, SD - 1 p.m. CST
Flittie Simmental // Schnabel Simmental // Lazy J Bar Ranch

90 Simmental Bulls - 40 Red Angus Bulls



LRS FALCON 442G



GIBBS 9114G ESSENTIAL



GW HILGER ONE 454H



SAS COPPERHEAD G354

DVAuction Broadcasting Real-time Auctions

Catalog and videos will be available online at www.dvauction.com or contact us to receive yours in the mail.

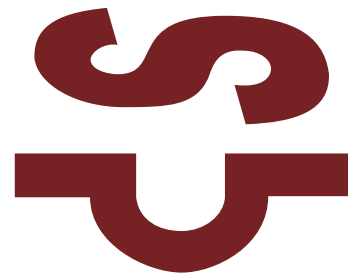
Schnabel
Ranch Simmentals

Tom and Meghan Schnabel
605-380-2811 - 605-577-6286



www.srsimms.com

GENERATIONS OF POWERFUL, DEPENDABLE PERFORMANCE!



ANNUAL PRIVATE TREATY BULL SALE - MARCH 4TH

CONTACT US TODAY TO LEARN MORE ABOUT THE OFFERING
PREVIEW OF SALE BULLS ON OUR WEBSITE NOW

KUNTZ KINGPIN 2H



ASA# 3968312 • Polled/S • Semen Available

	CE	WW	YW	ADG	MCE	MWW	CW	API	TI
EPDs	10.5	89.2	133.0	.27	4.0	84.7	40.9	129.0	80.3
%	10	1	1	2	35	2	1	1	1



KUNTZ MISS MOSES 308A
Dam of Kingpin



S/M LINEBACKER L572
ASA# 4211596 • Son of Kingpin • Sells March 4th

PLEASE SEE OUR WEBSITE OR CALL/TEXT FOR MORE INFORMATION
www.smfleckvieh.com



S/M FLECKVIEH CATTLE
Jeff Sorenson | 605-359-8728 (c)
Garretson, South Dakota
sorenson@augie.edu

GOEKEN CATTLE

SD SIMMENTAL ASSOC. RECOGNIZES GOEKEN CATTLE AS BREEDER OF THE YEAR

By Amy Blum

This year's breeder of the year routinely offer bulls that check all the boxes for function, soundness, and docility. They will celebrate their 43rd annual sale in January 2024, but to really appreciate the cattle this family puts together, you must appreciate the family.

With 750 cows to manage, there is no lack of work. Luckily, that's exactly how John and Susan Goeken like it. John's strong German roots make him believe a 40-hour workday is possible, and Susan's all-around ranching ability coupled with her passion for family and cattle mean those long days are both possible and worth the effort.

John has always known what he wanted and never been afraid to put in the work to get it. In 1977, he learned AI as a junior in high school and began selling bulls private treaty not long after. He made his best decision when he took enough time off work to marry Susan in 1981. The following year, John and Susan joined forces with Chuck Olson and Dale Werning to offer their Simmental bulls at auction.

Nowadays, customers join the Utica family in Lesterville to take a run at a bull battery

influenced by some of the family's greatest investments like ES Buckshot, which he purchased with Kevin Healy, and Yardley High Regard.

Goeken Cattle model the evolution of the Simmental breed, but more than that, the family

models what it takes to make a go in this industry. With their four kids and nearly 10 grandkids, the Goeken's future remains bright, and the SD Simmental Association is proud to honor the family as our 2023 Breeder of the Year!



43rd Annual

GOEKEN CATTLE BULL SALE

Selling 40 bulls

STRONG-AGE • SIMMENTAL • SIMANGUS™ • ANGUS
Coming two year-old & 16 month-old bulls

Monday, January 29th, 2024 • 1 p.m. CST

Lesterville Community Center • Lesterville, SD

*Come early sale day to view the bulls at the ranch, then join us for lunch
and bull auction at the community center!*



LOT 1 • PB SIMMENTAL • BW 84#
Ruby's Turnpike 771E X JMG Miss Imperial 533C



LOT 2 • PB SIMMENTAL • BW 88#
W/C Bankroll 811D X JMG Miss Imperial 533C



LOT 3 • PB SIMMENTAL • BW 80#
TKCC Carver 65C X JMG Miss Dream On 692S



LOT 10 • 5/8 SIM 3/8 ANGUS • BW 80#
JMG Midway 86G X JMG Spartan 828



LOT 12 • PB SIMMENTAL • BW 86#
JMG Midway 86G X JMG Broadway 735E



LOT 18 • PB SIMMENTAL • BW 86#
SAS Antidote F046 X JMG Miss Dakota 905G



LOT 33 • PB ANGUS • BW 75#
SAV Rainfall 6846 X JMG Remedy 051



LOT 29 • PB ANGUS • BW 86#
MAF Stunner 294 X Schaff Blackbird 923



LOT 26 • PB ANGUS • BW 84#
Growthfund X JMG Miss Packer 705B

Reference Sires : SAS Antidote, BCLR Cash Flow, Ruby's Turnpike,
JMG Midway, W/C Midland 285E, TKCC Carver 65C,
W/C Bankroll 811D, WS Jackson, JMG Viper, JMG Buckshot,
MAF Stunner, RCL Balboa, MAF Adonis, SAV Rainfall, Growthfund



JOHN & SUSAN GOEKEN

30139 435th Ave., Utica, SD 57067

JOHN 605-364-7432 • NATHAN 605-660-9626

AARON 605-660-4301

goekencattle@goldenwest.net • f

Auctioneer: Dan Koupal 605-491-1331

DVAuction
streamlining Real Estate Auctions

VISITORS WELCOME ANYTIME!

ND SIMMENTAL ASSOCIATION NAMES FETTIG FAMILY COMMERCIAL CATTLEMEN OF THE YEAR

By the Fettig Family

The Fettig Farms was established on September 5, 1948, when Benny and Katie Fettig moved from Napoleon, ND and started farming 7 miles north of Tappen, ND. They farmed and raised their family of 10 children for 43 years until moving back to Napoleon in 1991. At that time, Jeffrey Fettig, son of Benny & Katie, and his wife Bonnie Fettig (Gruebele) moved off Bonnie's Father's dairy farm onto the farmstead to take over. They started off raising pigs, 75 head of mixed breed cattle and farming conventionally.

In 1987 Jeff and Bonnie had identical twin boys, Christopher and Cole, who were welcomed into the world with farming and ranching in their blood. As soon as they could, they helped their parents as much as possible.

Eventually the pigs were sold, while Jeff continued to grow the cattle herd

each year by keeping his own heifers. 1996 was a year for change, the family started organic farming, raising mostly flax and wheat and Jeff purchased his first Simmental bull from TNT Simmental Ranch. This gave growth and inspiration for their future productions in farming and ranching.

Due to several years of fighting to find water for the cattle on their farmstead, they decided to purchase and move to the Oscar Sauer farmstead in 2000. After purchasing the farmstead, they were able to increase their herd up to 450 cows, by keeping their own replacement heifers and continuing to buy Simmental bulls. Jeff was pleased with the Simmental genetics and how it was making their herd more productive, the calves were selling heavier each year.

In 2005 Jeff started Aling the heifers

using top-quality Simmental bulls with the help of his neighbor friend, Jon DeKrey. Chris and Cole graduated Steele High School this same year and furthered their studies at Bismarck State College (BSC) for Farm and Ranch Management. They graduated in 2007 and then moved back to the farm to help alongside their father. The boys learned how to AI in college and took over that task of Aling heifers and even a few cows. They continued to AI for a few more years until life got too busy, then they stopped, but buying top-quality Simmental bulls never did.

On February 4, 2015, Jeff lost his life to a massive heart attack while on vacation in Jamaica with Bonnie and neighbors Jon and Julie DeKrey. This tragedy left the farm to Bonnie, Chris, and Cole. The

Fettigs, Cont'd on Page 16



KLINE

SIMMENTAL RANCH
Hurdsville, North Dakota

12th Annual Production Sale
FEB. 4, 2024

AT THE RANCH • HURDSFIELD, ND

Selling: **55 Simmental and SimAngus™ Bulls**
35 Registered Open Heifers
8 Commercial Open Heifers
& 90 Red & Black Sim-influence Bred Heifers



MADER WALK THE LINE 92J x SPRINGCREEK TESLA 6E
ASA#: (4291338) • BD: 1/22/2023 • PB SM

Act. BW	EPDS	CED	BW	WW	YW	MCE
92		7.4	4	102.5	150.8	5.4
Adj. 205	MILK	MWW	MARB	REA	API	TI
788	23.2	74.3	-0.04	0.89	115.2	84.7



SUNNY VALLEY CONVOY 24J x WLB BLOOD RUNNER 3011C 461F
ASA#: 4286519 • BD: 2/21/2023 • PB SM

Act. BW	EPDS	CED	BW	WW	YW	MCE
88		8.4	3	89.8	135.1	5.4
Adj. 205	MILK	MWW	MARB	REA	API	TI
745	25.4	70.1	0.01	1.01	127.7	81.6



KLRS IRONMAN J40 x KUNTZ SHERIFF 8A
ASA#: 4286537 • BD: 2/28/2023 • 3/4 SM 5/32 AN 3/32 CS

Act. BW	EPDS	CED	BW	WW	YW	MCE
95		8.5	2.9	87.6	140.4	5.6
Adj. 205	MILK	MWW	MARB	REA	API	TI
808	26.4	70.2	-0.03	0.95	121	79.4



SUNNY VALLEY CONVOY 24J x TNT TANKER U263
ASA#: 4286541 • BD: 3/18/2023 • 3/4 SM 1/8 AN 1/8 CS

Act. BW	EPDS	CED	BW	WW	YW	MCE
95		8.8	2.8	89.6	136.1	7.5
Adj. 205	MILK	MWW	MARB	REA	API	TI
790	27.2	71.8	-0.02	0.92	124.3	80.9



CROSSROAD STRIDE H149 x KUNTZ SHERIFF 8A
ASA#: 4286540 • BD: 3/7/2023 • PB SM

Act. BW	EPDS	CED	BW	WW	YW	MCE
88		8.5	2.9	79.5	119.1	3.7
Adj. 205	MILK	MWW	MARB	REA	API	TI
802	26.3	65.8	-0.18	1.02	109	70.8



CROSSROAD STRIDE H149 x KUNTZ SHERIFF 8A
ASA#: 4286545 • BD: 2/26/2023 • PB SM

Act. BW	EPDS	CED	BW	WW	YW	MCE
68		8	3.2	84.7	127.4	3.1
Adj. 205	MILK	MWW	MARB	REA	API	TI
745	24	66.1	-0.16	1.02	113.4	73.8

Sale feature!



Selling your choice out of 3 red
Mader Walk The Line 92J open heifer calves
ASA 4286553 • ASA 4286551 • ASA 4286547
L7 is pictured with mom 59G.



TT FIREBALL 280B x SRF ZOOM 938G
ASA#: (4286555) • BD: 3/2/2023 • 3/4 SM 1/4 AR

Act. BW	EPDS	CED	BW	WW	YW	MCE
72		17.3	-3.6	62.7	89.8	10.2
Adj. 205	MILK	MWW	MARB	REA	API	TI
794	30.7	61.8	0.29	0.75	139.4	76.9



SUNNY VALLEY CONVOY 24J x RENDEZVOUS LOCOMOTIVE 80B
ASA#: 4286514 • BD: 3/3/2023 • PB SM

Act. BW	EPDS	CED	BW	WW	YW	MCE
93		8.6	2.8	88.9	134.8	5.8
Adj. 205	MILK	MWW	MARB	REA	API	TI
811	26.2	70.4	-0.01	1.03	127.6	81

FEEDER CALF MARKETING ASSISTANCE
REPLACEMENT HEIFER CALF BUY BACK

*Our customers' success is
our success!* **DVAuction**

Visitors welcome anytime!

Monty & Terri • Matt, Eddy, Emersyn & Landri Kline
Matt: (701) 693-6317 • Monty: (701) 693-6806
E-mail: klsrcows@gmail.com

www.KLSRCOWS.com • [f](#) /Kline Simmental Ranch
Contact us for a catalog, videos, DNA and other updates prior to sale day.

ND SIMMENTAL ASSOC. NAMES TOURDOTS PROMOTER OF THE YEAR

By Bryan Leapaldt

The 2023 Promoter of the Year goes out to a couple who have been a part of this Simmental event for many years. They also can probably boast having the longest trip to get to it each year! Larry & Michelle Tourdot from Mauston, Wisconsin.

They are a 5th generation farm that started in 1868 on Michelle's family farm as a dairy, hogs and sheep. In 1964, they sold the sheep and bought Horned Herefords.

In 1973, they had their first Simmental-cross steer, and in 1974, they built a small feedlot and saw firsthand how fast Simmental grew and finished.

In 1975, the first Simmental female was purchased from Standing Star Ranch of Wyoming. Their ad in the Simmental magazine inspired Michelle for life when it came to Simmental.

In 1980, she bought her first bull while in college (Irish Rover breeding). They always bred for quality, not color and they used Simmentals exclusively. They purchased from various breeders until the early 90's when they started attending the Skillestad/Lassle sale annually.

In 2004, Larry & Michelle were married and she turned him into an addicted Simmental life partner! After the Skillestad dispersal took place, they started attending various sales in ND. They try to purchase 1-2 head annually. They often use ASA reps to help with their purchases, with distance being an issue.

They are still looking for that perfect heifer, just like the rest of us! She must possess good calving ease, udder, feet, disposition, grow like a weed, be polled and most recently must also be black. In other words, they want their cake and to eat it too!

They have a small annual sale near Prairie du Chien at the end of January where they are very strong advocates for the breed. They are always working to educate producers in their area on the value of Simmental genetics by using all the tools made available to them.

Most operations in their area are 15-40 cows, and are family operations involving the husband, wife and kids. The cattle are looked at after work or school. Therefore, quiet, easy to handle, problem free Simmentals are a must in their area! They have attended many ASA educational meetings and ND Stockman's events in North Dakota all with the intent of learning more so they can bring it back home to teach their neighbors and to implement in their own operation.

The Tourdots are two of the most genuine people one will ever meet. For example, the first time they purchased a bull or heifer from Bryan Leapaldt, they sent him a thank you basket! Then a few years back, Erika Kenner purchased a heifer from them – a pick of their cow herd out of a sale in Minnesota. When Erika was at their place to pick the heifer – she picked a bred heifer. They asked her



Pictured (L to R): Bryan Lapaldt, Michelle & Larry Tourdot

if she would have picked something in the open heifer pen, what would it have been? Erika figured they were wondering what her favorite was just so they'd know. Erika took off for home as they had already arranged to deliver the heifer after getting the health papers done. When they arrived in Leeds a little while later, they surprised Erika and had brought along an extra! That open heifer she liked! They said they felt she had paid too much for the pick, so they gave her the open as a bonus!

They are truly a part of the ND Simmental family, even though they are from Wisconsin. Congratulations Larry & Michelle!

Fettigs, Cont'd from Page 14

farmstead to this day is operated the same as Jeff would want it to be, still purchasing high quality bulls and keeping a closed herd by raising replacement heifers. The Fettig Farms has now grown to 650 head operation with the calves being weaned October 1st and backgrounded for approximately 60 days. Heifers start calving February 15th on a 45-day calving period and cows start March 5th, on a 60-day calving period.

Fettig Farms has thrived from buying high performance Simmental bulls. Not only have their weaning weights increased but also the performance on feed has drastically increased over the years. The cows' performance continues to get better and better each year too. In recent years, most of the Fettig Farms genetics has come from numerous top breeders in the state.

Fettig Farms is currently owned and operated by Bonnie Fettig, her sons Chris

and Cole and their families. Chris, his wife, Emy, and their children Jordyn (15), Jase (7), and Jaxtyn (5) live just five miles from the farmstead. Cole, his wife, Stacie, and their boys Ty (5) and Levi (3) live next door to the farmstead. If there is a Simmental bull sale in the area it is more than likely you will run into Chris or Cole or both - always out looking for that one bull that will make their herd a little better.

Congratulations to the Fettig Family of Fettig Farms!



Ellingson Bulletproof L307 ASA# (4219448)

CE	BW	WW	YW	ADG	MCE	MM	MWW	MB	REA	\$API	\$TI
9	4.7	112	188	.47	6	24	80	.21	.85	128	93

Adj. WW: 879 lbs. Adj. YW: 1,455 lbs.



Ellingson Honor L313 ASA# (4219424)

CE	BW	WW	YW	ADG	MCE	MM	MWW	MB	REA	\$API	\$TI
10	.9	91	143	.32	6	30	75	.35	1.23	154	93

Adj. WW: 831 lbs. Adj. YW: 1,551 lbs.



Ellingson Vanderbilt L322 ASA# (4219497)

CE	BW	WW	YW	ADG	MCE	MM	MWW	MB	REA	\$API	\$TI
5	5.1	117	182	.40	4	29	88	.27	.94	124	96

Adj. WW: 876 lbs. Adj. YW: 1,594 lbs.



Ellingson Guardian L327 ASA# (4219487)

CE	BW	WW	YW	ADG	MCE	MM	MWW	MB	REA	\$API	\$TI
9	2.7	118	179	.39	6.2	31	90	.45	1.27	163	109

Adj. WW: 832 lbs. Adj. YW: 1,319 lbs.



Ellingson Yuma L328 ASA# (4219415)

CE	BW	WW	YW	ADG	MCE	MM	MWW	MB	REA	\$API	\$TI
4	5.3	97	151	.34	-.4	22	71	-.15	.74	105	76

Adj. WW: 804 lbs. Adj. YW: 1,450 lbs.

For catalogs and information:



Terry Ellingson & Family

Phone: 701-384-6225

Cell: 701-741-3045

5065 125th Ave. NE • Dahlen, ND 58224

email: tellings@polarcomm.com

Guest Consignor:

Strommen Simmentals, Arthur, ND • 701-967-8320

The catalog and updated information (homozygous polled test, ultrasound and scrotal measurements) will be available online.



EPD as of 12.5.23

Looking for Performance?

Ellingson Simmental Performance Bull & Female Sale

Friday, January 26, 2024 • 1:00 pm CST

Sale Location: At the farm, Dahlen, ND

24th Anniversary

Selling:

**66 Yearling Simmental and SimAngus™ Bulls
24 Open Yearling Heifers**

Other sires include: KBHR Gunsmoke J131, KS Net Income H433, Poss Deadwood, KS Vanderbilt G220, WS Epic E152, RFS Bulletproof B42, Brown JYJ Redemption Y1334, and Ellingson Beefmaker Y113 Rockin H Captivate J75, WS Proclamation E202, Ellingson Guardian J141 and HCC Whitewater 9010.

Bulls will be SEMEN TESTED and GUARANTEED BREEDERS.



Ellingson Net Income L363 ASA# (4219451)

CE	BW	WW	YW	ADG	MCE	MM	MWW	MB	REA	\$API	\$TI
7	2.8	94	151	.36	4	26	73	.14	1.21	131	87

Adj. WW: 834 lbs. Adj. YW: 1,450 lbs.



Ellingson Cowboy Logic L373 ASA# (4219419)

CE	BW	WW	YW	ADG	MCE	MM	MWW	MB	REA	\$API	\$TI
11	3	97	151	.34	7	23	72	.22	.99	143	90

Adj. WW: 788 lbs. Adj. YW: 1,404 lbs.



Ellingson Black Ice L3036 ASA# (4241435)

CE	BW	WW	YW	ADG	MCE	MM	MWW	MB	REA	\$API	\$TI
12	2.9	100	160	.37	8	24	74	.47	1.04	162	99

Adj. WW: 694 lbs. Adj. YW: 1,364 lbs.

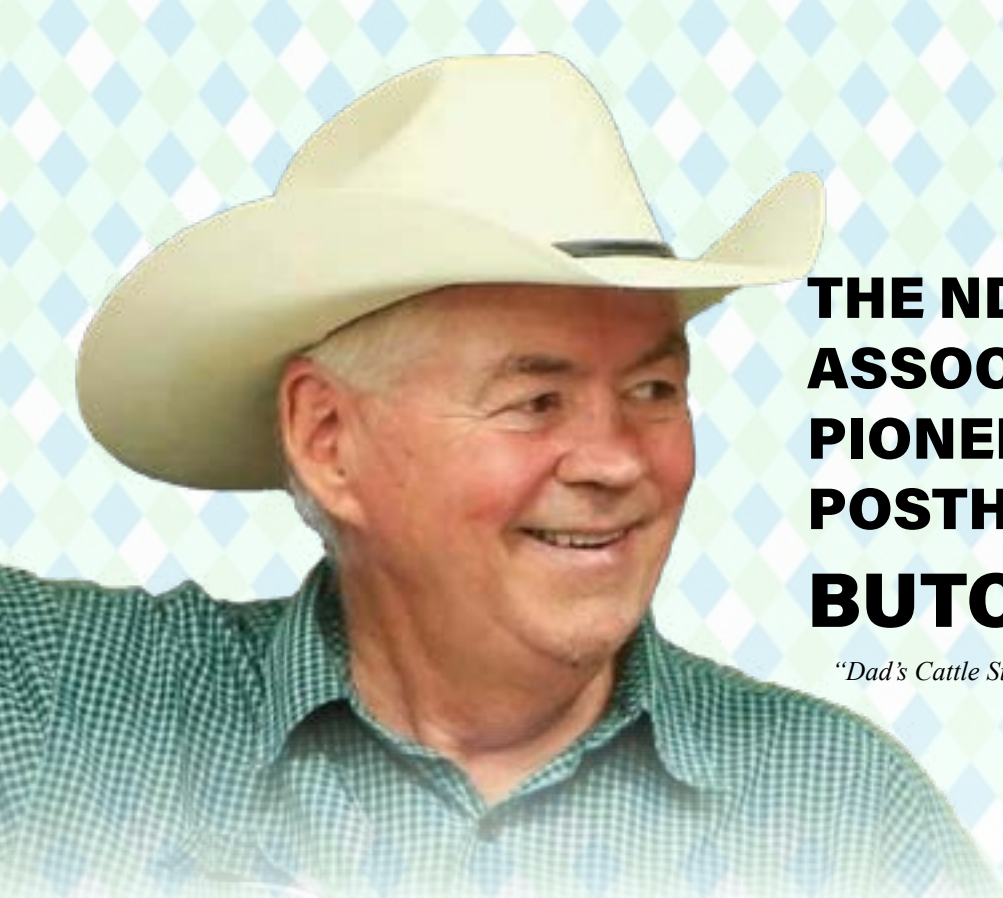


HHS Georgia 802G ASA# 3627373

CE	BW	WW	YW	ADG	MCE	MM	MWW	MB	REA	\$API	\$TI
16	-1.1	83	125	.26	11	20	62	.51	.76	174	94

Donor dam, ten sons and two full sibs sell.

www.ellingsonsimmentals.com or www.simmental.org



THE ND SIMMENTAL ASSOCIATION PRESENTS PIONEER AWARD POSTHUMOUSLY TO BUTCH HAUGLAND

"Dad's Cattle Story" By the Haugland Family.

Gerald "Butch" Haugland was raised on the family farm near Crosby, ND. Butch had a deep love for cattle and horses that began early on in his life. He was born with an entrepreneurial spirit and early on he wanted to have his own cattle business. Butch purchased his first group of cows from a producer near Fortuna, ND. He enjoyed showing, judging and selecting cattle. Butch graduated from NDSU with a degree in agricultural education and after he and Diane were married, came back to Divide County and began to grow their ranch and their family. Butch became passionate about Simmental genetics, appreciating the maternal and growth traits of the breed and started a purebred operation.

He and friend, Jorden Krecklau, another Simmental breeder from Divide County, were part of the NW Simmental group early on and they sold their purebred Simmental bulls in Glendive, Mont., then Baker, Mont., and Bowman, ND, for years.

Butch became an auctioneer and spent over 35 years selling cattle at production sales. Whether on a producer's farm or at the sale barn, Butch was right at home visiting with ranchers and selling cattle.

At home, Butch loved catching the

horses, loading up the family in the single cab pickup and driving out to the pasture to check the cows. He and the family would also drive the cows home in the fall. Butch loved being a cowboy.

Butch strived for continual improvement and was passionate about the beef industry and the Simmental association. He played a key role in selecting and promoting the cattle that would be sold at the NWSS sale annually. He utilized artificial insemination early on in his own operation to improve the genetic traits he was selecting for.

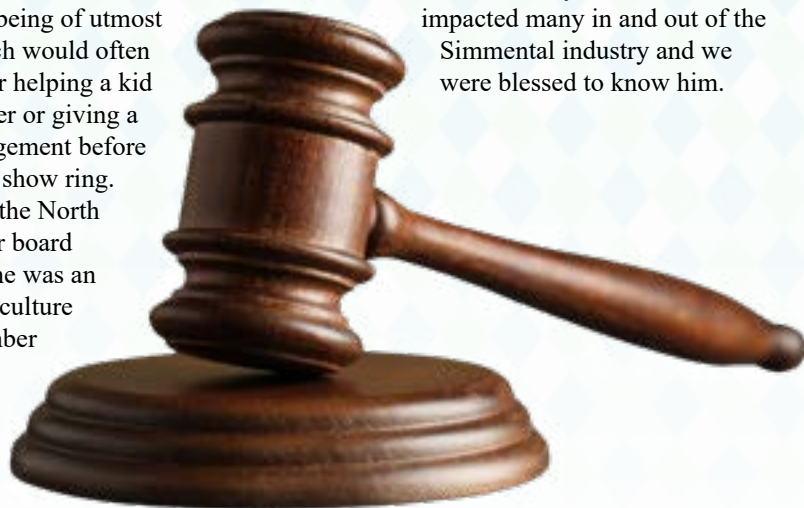
He was also committed to the future of our industry by helping kids get started in 4H and FFA with their livestock shows being of utmost importance. Butch would often be seen at the fair helping a kid fit their show steer or giving a word of encouragement before a kid entered the show ring. Butch served on the North Dakota State Fair board for years where he was an advocate for agriculture and a board member who wanted to grow and improve

things for the future.

Many producers, like his good friend Lyndon Hoiby, can recall times where Butch helped them or gave them advice or encouragement to pursue their passions.

Butch had a big personality and he was a "go big or go home" kind of guy. He said what he meant and meant what he said. He taught his kids and grandkids the importance of never letting go of the rope when leading a show steer or never letting go of the rope when times in life got tough. Butch was a passionate fighter and fought an impressive battle with cancer for three years, all the while he never let go of the rope and kept hope and faith. Although

he left us this last year, his life impacted many in and out of the Simmental industry and we were blessed to know him.



R&R CATTLE COMPANY

*Consistency
Uniformity
Integrity
Dependability*

**This is what our program
stands for.
If this is important to you -
be there on sale day.**

R&R FINAL STRAW K242 - High-selling bull at the 2023 sale. Owned by Beitelspacher Ranches. Bulls like this sell February 16.



February 16, 2024
annual production sale

1:00 PM CT at the Ranch | | Chamberlain, SD

60 Simmental and SimAngus™ Bulls

**Including lots from guest consignor
Cable C Cross Ranch**



R & R CATTLE COMPANY
Steve & Elaine Reimer
25657 345th Ave., Chamberlain, SD
605-234-6111 | | 605-680-1939
www.rrcattleco.com
Harley & Dawn Cable 605-680-0845

Bid live online **DVAuction**
Broadcasting Real-Time Auctions

ALLIED
GENETIC RESOURCES
www.alliedgeneticresources.com

Marty Ropp 406-581-7835
Corey Wilkins 256-590-2487
Jared Murnin 406-321-1542

Over 50 years of producing High Caliber Cattle

Questions *with* QUANDT CATTLE



Tell me a little about the history of Quandt Cattle Co? How long have you had cattle and how long have you had Simmentals?

The Quandt Family has always been involved in the cattle industry. It first started when Dora Sleeter who was born in Germany in 1861 traveled to the United States at the age of 22. Then in 1883 she homesteaded the S/W ¼ of a field by where our main farm is located today. She then went on to marry Ernest Washner in 1888, who was the local blacksmith for the city of Guelph and Ludden. Their Daughter Edith continued to farm and ranch and married Christopher Quandt in 1928 and had five children. Walter went on to continue farming and ranching and married Bernie Super in 1957. They had 9 kids together, Mary,

John, Mike, Susan, Jeff, Anne, Kathy, Jim and Jason. All five boys continued to farm and ranch together, and expanding the operation to what it is today. They passed on the operation to the current generation which involves Jason, John's three sons, Justin, Nathan, and Stephen, and Jason's oldest son Gabe.

How many years have you had a bull sale?

This year marks our 12th annual bull sale. We first got started in Simmental seed stock 15 years ago when Jason started Artificially inseminating our commercial herd to purebred Simmental bulls. He also purchased purebred breed bulls and cows while utilizing embryo work to grow the herd to what it is today.

Quandts, Cont'd on Page 22



Benda Ranch

ANNUAL PRODUCTION SALE

Monday, February 12, 2024 • 1 p.m. • Kimball Livestock Exchange, Kimball, SD



JBS MR. EAGLE 908L • ASA# 4275376
Hook's Eagle x Hart All In
5/8 SM • **ADJ. WW: 906 • RATIO: 123**



JBS MR. EPIC 560L • ASA# 4275419
OMF Epic x Hart Final Answer
3/4 SM • **ADJ. WW: 816 • RATIO: 111**



JBS MR. HIGH ROAD 138L • ASA# 4275369
KBHR High Road x Hook's Black Hawk
3/4 SM • **Adj. WW: 749 • RATIO: 101**

Selling: **55 Simmental & SimAngus™ bulls**

BULLS HAD NO CREEP FEED! • FREE WINTERING UNTIL APRIL 15TH & SEMEN TESTED.



JBS MR. EARL 627L • ASA# 4275363
3BS Earl x CCR Cowboy Cut
PB SM • **ADJ. WW: 771 • RATIO: 104**



JBS MR. BULLETPROOF 854L • ASA# 4275447
RFS Bulletproof x JBS Mr. Crimson Tide
PB SM • **ADJ. WW: 825 • RATIO: 112**



JBS MR. GOLD 167L • ASA# 4275395
TJ Gold x Cables Turn Ur Head
PB SM • **ADJ. WW: 744 • RATIO: 101**



JBS MR. 637 719L • ASA# 4275358
TSN All Around F637 x Hook's Broadway
PB SM • **ADJ. WW: 823 • RATIO: 111**



OTHER SIRES INCLUDE
LBRS Genesis, CDI Major Impact
Deer Valley Growth Fund, Bridle Bit Colorado
GW Copperhead

**ALSO THIS YEAR, WE WILL BE
OFFERING THE PICK OF OUR
OPEN REPLACEMENT HEIFERS!**

BENDA RANCH SIMMENTALS • 26106 366th Ave. • Kimball, SD 57355
Home: 605-778-6703 • **Jim:** 605-730-6703 • **Jay:** 605-730-0215
Email: bendaranch@midstatesd.net

www.**BendaRanch.com**
Join us for our Video Sale! Watch and bid online.

DVAuction
Disruptive Video Auction

Quandts, Cont'd from Page 20

What was the hardest part to start having a bull sale?

I think the hardest part to starting a bull sale is growing your customer base and getting your name out there. Advancing one's genetics and riding the highs and lows in the bull sale and cattle industry.

What would be your advice to someone who is just starting out in the Simmental Seedstock business?

Pick your direction of what type and kind of cattle you want and stick with it. Treat your customer's really well. Quality over Quantity.

Tell me about Gabe's involvement and decision to be part of Quandt Cattle Co?

Gabe has always had an interest in cattle. He was my right-hand man and traveled many miles to purchase purebred cattle and to attend bull sales. Gabe took a liking for sales like the ND State Simmental Sale and typically would pick out great quality bred heifers that he used to grow his own personal herd. He had many cows that he used as flush cows that further expanded Quandt Cattle Co's good genetics. Gabe has a really good eye for cattle and he has a real knack for people. He enjoys working the day to day but also getting a chance to visit with fellow producers. Gabe manages a majority of the breeding decisions, AI, and managing the herd work process. I give a lot of credit to him for where our operation is today and am grateful to have him as a partner in Quandt Farm and Cattle Co.

Can you give me some background on who is involved and what their job description is?

John, Mike, and Jeff have retired from our farming partnership (Quandt Brothers) but are still greatly involved and help out a lot during or peak seasons. Jim is still actively farming with Quandt Farms and is our amazing farm mechanic, he can literally fix anything. Jason manages the farms employees (he's the straw boss) and Gabe manages the cattle operation along with Jason and helps out in all other farm entities from planting, spraying, combing, and the hog operation. Justin manages the planting and fertilizing decision along with directing all the irrigation work.

Nathan manages the drain tiling, spraying/chemical and is our shop foreman.

Stephen manages the hog operation along with doing a large majority of the bookkeeping. With all that being said, each member of our partnership is active and always willing to help with every portion of our farming operation. I truly believe this is what has made our farm so successful for so long.

I find it fascinating that you have such a large family that all work together on a diverse operation. What do you think your family does at Quandt Brothers that makes that possible?

I feel that throughout the generations, we've been taught the importance of family and the value of respecting one another. Even in hard times and disagreements, we've found a way to come to common ground to drive this operation in the proper direction. We've always been future focused and have strived to make it better for the next generation of Quandts. No matter if it's for my children or my nephew children, we want this farming operation to be here for the next 140 years.

Diversified farming operations are kind of a thing of the past? Why is diversification important to Quandt Brothers?

Diversification is key to a large multi-family farm. Again, we are future driven, always looking at what it will take to make this farm be sustainable for our future generations to farm. We know that agriculture alone won't be able to do that, so cattle and hogs are other main sources of income for our families. We will always look at other avenues to diversify as well as ways that we can become more self-sufficient.

A few years ago, Quandt Brothers added pigs to your operation?

We decided to do it because it was a way to expand without having to buy expensive land. It is going well, 3 years down, 7 more to go. We have learned a lot about pigs and the barns over the course of the past three years. It has been a learning

Quandts, Cont'd on Page 24



39th Annual **Lewis Farms**

Bull Sale

Saturday February 24, 2024

340 Bulls Sell
120 Black Simmentals
80 Red Simmentals
40 Fullblood/Fleckvieh
70 Black Angus
10 Red Angus
20 1/2 & 3/4 Percentage Bulls



Producing high quality, hard working bulls for progressive cattlemen for over 40 years

- Affordable bulls selling to 90-95% repeat customers
- Semen Evaluated and Guaranteed
- Genetic testing for POLLED, COLOR and CARCASS
- Calving ease, maternally oriented, sound built, easy fleshing, high performing bulls built for today's times
- Offering yearling and extra age bulls, (no carry-overs from the year before)
- Bulls developed on a high roughage ration
- Free delivery in Western Canada
- Lewis Farms will assist in delivery of American sold bulls.

Kyle Lewis: 780-220-9188

kyle@lewisfarms.ca

Ken Lewis: 780-818-3829

Fullblood Division:

Mark Land & Cattle

Lenny Mark 780-842-7207

www.lewisfarms.ca

USA Customers Exchange Rate Benefit!

Quandts, Cont'd from Page 22

curve for sure but there is a lot of good people in the swine industry who are quick to offer great advice.

What surprised you the most as a cattleman, about the pig enterprise?

The genetics of hogs evolves so much faster than cattle. You won't see the full effects of the genetics you pick in cattle for up to eight years, where in pigs you see them in two years.

What is the biggest benefit of having a pig farm in your diversified operation?

The Diversification was a way for us to keep investing in the farm without the major negative cash flow impact that buying land right now has. I expect it to be one of the many pillars of our farm someday. Also the manure is very promising to help cut down on our fertilizer inputs and is a rounded source of nutrients for our crops.

What is the biggest negative of the pig farm?

The toughest part of being a part of the swine industry is learning how pigs work. It was totally new to us. We're also still learning every day. Having good people around helped us make things easier. It's another operation to manage and keep track of but there isn't a whole lot of negatives.

Your family serves on many boards, Justin on the Corn Board, Stephen on the Pork Board, and you on the Simmental



Board. How do you make time for that and why do you think it is important?

Since, our operation is larger scale and we have highly dependable staff, we are able to take time away for the day-to-day operation to be involved in these boards. Our end goal is to have a better basis for corn and soy beans so we try to advocate for different identities that use corn and soybeans as an end product. We truly see the importance of making time for board such as these as they have a critical impact on our industries.

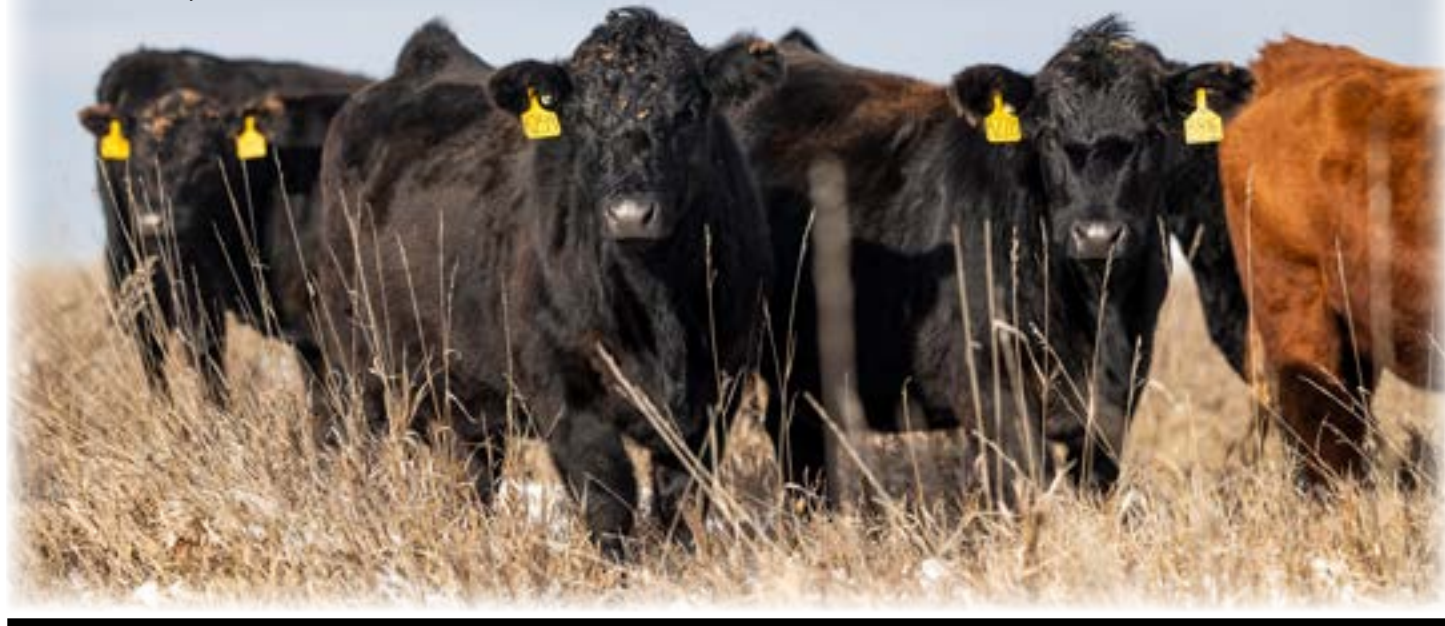
What are the biggest challenges you see in the beef industry in the next five years?

I see a lot of family ranches slipping away as the current generations are retiring and the next are not choosing to take them over. We are losing an amazing generation of cattleman that have years

and years of experience and knowledge in the industry.

How do you think the Simmental breed is equipped to meet those challenges?

I believe the Simmental breed can meet any challenge that is set before it. I do have concerns about our emphasis on one multi-trait epd that leaves out other important epd's like weaning weight, yearling weight, milk, fertility and docility. These traits have generationally made the Simmental breed a sustainable one. The end result for commercial cattlemen is that they are paid by the pound. The Simmental breed has all the capabilities of meeting these challenges if we can find common ground in these traits. At Quandt Cattle, we truly believe we will keep this breed a successful one for future generations.





ANNUAL PRODUCTION SALE Wednesday, Feb. 14, 2024

1 p.m. • At the Ranch • Douglas, N.D.
Join us for lunch at 11 a.m.

selling 50 Red & Black Simmental &
SimAngus™ Bulls



L48 • ASA # 4292636
ROUND UP X DIPLOMAT F18 (DONOR)



L35 • ASA #4292625
EPIC X DIPLOMAT F18 (DONOR)



L67 • ASA # 4292603
OUTLAW X JULIET F129 (DONOR)



L74 • ASA # 4294534
GQ ADVANTAGE X WRANGLER



L18 • ASA#4294502
AVALANCHE X PAYS TO BELIEVE



L33 • ASA # 4294476
EPIC X MAIN EVENT

Black Sires: GQ Advantage • Epic
Essential • APCR Avalanche115J BZ
Honor • Falcon • Dakota Outlaw
American Proud • Change is Coming
Genesis • Big Bang
Red Sires: Cardinal • Redwood
TT Jack Daniels • Round Up
Angus Sire: Power Chip



Call, e-mail, text or check our website for more information or to request a catalog!

Gary Sys: (701) 509-1154 • Derek Sys: (701) 509-5870

E-mail: dj.sys@hotmail.com • www.SysSimmentals.com

Watch for our consignments to the ND Simmental Assoc. Classic and the Northwest Select Simmental Sale!

GENUINE JBH PODCAST FEATURES LIVESTOCK PHOTOGRAPHY TIPS AND MORE

By Tamra Heins, editor



THE **BRAND CHAMPION**
MARKETING NETWORK

Our featured podcast for January is The Genuine JBH, The Bradcast, hosted by J Bradley Hook. While many know Brad Hook as a livestock photographer or consider him a pioneer in the show cattle industry, his podcast involves many different topics. Episode content can range anywhere from the challenges of livestock photography to a more personal look at Hook's own health.

Forty years in any industry will give one plenty to talk about. In the cattle industry, if you combine the personalities you meet and those experiences you have along the way, the opportunities to create entertaining episodes is endless. The popularity of these episodes is evident with The Genuine JBH Podcast episodes are nearing two million listeners.

The podcast has been going on for about three years, Hook said when he first started, his intent was to produce one a week, but this proved to be very stressful. Hook explains, "It takes about 24 hours to produce a one-hour

podcast." Hook admits there are things he could do to make it less labor intensive but says he wants to produce a high-quality kind of podcast that he, himself would like to listen to.

"People like to hear a good story. And good people that are good at what they do, within their own industry makes a good podcast, stated Hook. He has since changed his attitude about weekly episodes for self-preservation. Hook now subscribes to a newly created mantra of "You get what you get, when you get it, but it will be good."

This podcast is not just about cattle or photography. Episodes routinely feature interviews with trendsetters and legends in the livestock industry from all species. Some episodes include first hand accounts of historical moments in agriculture like the "farm crisis of the 80's" or as recent as the heat catastrophe in Kansas feedyards in 2022.

JBH Podcast, Cont'd on Page 28





We tip our hats

to the generations of cattlemen
who have profited from the
MATERNAL HETEROSIS
and **HYBRID VIGOR** bred
into **DAKOTA XPRESS**
SIMGENETICS.

If you need a little more
POWER and **PAYWEIGHT** in
your herd, *come, ride with us!*



CE	10.2
BW	1.7
WW	85.8
YW	134.7
MCE	6.6
Milk	22.7
MWW	65.3
Marb.	0.03
REA	1.0
API	123.6
TI	81.7

Estevan

R+ Estevan • The top-selling bull from the R+ Total Herd Dispersal at \$70,000.



CE	8.1
BW	3.8
WW	93.2
YW	150.2
MCE	4.5
Milk	31.3
MWW	77.9
Marb.	0.25
REA	1.08
API	144.3
TI	89.0

Special Ops

QB Special Ops K11 • A high-selling bull from Quandt Brothers at \$30,000.

Annual Production Sale:

FRIDAY FEB. 16, 2024

Kist Livestock, Mandan, ND • 1 p.m.

140 Bulls • 55 Bred Heifers

Red • Black • Simmental • SimAngus™



*Contact us to
be added to the
mailing list*

Wade Staigle Family (701) 226-6464

Kevin Hansen Family (701) 720-6551

www.dakotaxpress.com • **DVAuction**
Streamlining Real Estate Auctions

A PODCAST ABOUT LIVESTOCK, PHOTOGRAPHY AND THE INDUSTRY RELATIONSHIPS ALONG THE WAY.

JBH Podcast, Cont'd from Page 26

Reminiscing about how the industry has changed throughout the years as online sales and social media have changed how we buy and sell livestock appeals to many, “But not to everyone.” Hook adds.

Episodes of Hook’s own health issues from dealing with weight loss drugs to undergoing open-heart surgery this summer, he is not afraid to share what he’s learned to try and help others. His ability to share personal stories only make his episodes more interesting and his followers anxiously waiting for the next episode to drop.

The podcast has opened up marketing opportunities for Hook and his team. His team includes his daughter, Sage and son, Drake along with other very talented marketing professionals such as Taylor Durst and Lakyn Lind. Hook and his

wife of more than 30 years, Shawn, is also occasionally the subject matter. One episode provided a light-hearted look at the effect of the social media platform “Pinterest” has on home improvement projects.

The Brand Champion Marketing Network is another aspect of the podcast that gives new and specific marketing tools for clients. Time slots can be purchased where a client can talk more in depth about a product, service or event. It is also a format where testimonials can be used to interact with a very specific

target audience. Time slots can be from 15 minutes to 60 minutes. Hook has clients that use the podcast only as their only marketing tool and have had enormous success doing so.

When asked what surprised him the most when he got into the podcast world Hook, at first didn’t have much to say, but eventually he asked if he could answer that question. Hook explained, “The biggest surprise I had about this venture is all the people that listen. When I was in the hospital for my heart surgery, the response was overwhelming with thousands of followers wishing him well on his surgery and his recovery. Hook said, “It was unreal. That really motivated me to want to keep doing them.”



Hoiby Simmental Bulnanza

Northwest
North Dakota's
Source for
Simmental &
SimAngus™ Genetics!

Saturday,
FEBRUARY 17, 2024

1 p.m. CST • McGregor, North Dakota

At the ranch in the heated sale barn.

Please join us for a pre-sale lunch!

Selling:
40 Bulls

10 Bred Heifers

10 Open Heifers

*Simmental & SimAngus™
Black and Red*



**R Plus Nitro X PF Spillway
3/4 Simmental 1/4 Angus**

CE	BW	WW	YW	MCE	M	MWW	API	TI
6	3.5	76	118	4	27	65	127	73



**MRL BattleCry X Hooks Beacon
Purebred**

CE	BW	WW	YW	MCE	M	MWW	API	TI
11	2.7	88	130	7	28	72	138	85



**JC King of the Road X R Plus Nitro
Purebred**

CE	BW	WW	YW	MCE	M	MWW	API	TI
11	0.5	84	128	6	31	72	151	88



**PF Outfit X SDS Graduate
3/8 Simmental 5/8 Angus**

CE	BW	WW	YW	MCE	M	MWW	API	TI
12	-0.5	81	127	3	23	63	140	88



**Hooks Hercules X Leachman Cadillac
3/4 Simmental 1/4 Red Angus**

CE	BW	WW	YW	MCE	M	MWW	API	TI
10	1.5	83	128	5	23	65	146	87



**JC King of the Road X WS Proclamation
Purebred**

CE	BW	WW	YW	MCE	M	MWW	API	TI
14	-1.5	81	122	8	30	70	165	92

Bulls pictured at 8-9 months of age. EPDs as of 12-12-23.

HOIBY SIMMENTAL RANCH

Lyndon & Shelley Hoiby • Paige Reid • Levi Hoiby

7890 101st Ave NW • McGregor, ND 58755

Home: 701-546-4043

Lyndon: 701-641-1083 • Paige: 701-641-9938

DVAuction Broadcasting
Real-time Auctions



hoibysim@nccray.com

hoibysimmentalranh.com

KAE LBERER RANCH • SRF SIMMENTALS • KINN SIMMENTALS *present the*

EDGE *of the* WEST

P R O D U C T I O N S A L E



TJ War Paint 759J



KBHR Hartland



MRL Missile 138C



Bred Heifers like this sell in volume!

Join us
Feb. 13, 2024
1 p.m. CST • Kist Livestock, Mandan, ND

Selling
80 Simmental & SimAngus™ Herd Bulls
90 Simmental & SimAngus™ Bred Heifers

*Including the COMPLETE
DISPERSAL of Claye & Michelle
Kaelberer's Bred Heifers!*

*Contact Us
for Info!*

KAE LBERER RANCH
Claye & Michelle Kaelberer Family
Claye • 701-220-3124
Connor • 701-400-7323

SRF SIMMENTALS
Todd & Kelly Finke Family
Todd • 701-240-7711

KINN SIMMENTALS
Tyler & Tiffany Kinn Family
Tyler • 701-220-5276
Davis & Amber Kinn Family
Davis • 701-400-5108

www.**edgeofthewestsale**.com

PUTTIN' BEEF WHERE IT COUNTS, IN YOUR POCKET BOOK!

EKSTRUM SIMMENTALS Annual Bull Sale | February 3, 2024 | Kimball, SD



EKR Hawkeye 1L

BGS/BM Captain Scream 63D x CCE EKR Ms Elderado 572C
ASA#: 4290219 • BD: 1/20/23 • PB SM • Act. BW: 90# • Act. WW: 920#
EPDs CE 7.3 BW 4.1 WW 96.3 YW 139.0
MCE 5.1 MM 19.2 MWW 67.1 API 103.0 TI 76.0



EKR Wyatt 5L

Erixon Hatfield 12H x CCE EKR Ms Wildcat 026X
ASA#: 4290209 • BD: 1/31/23 • PB SM • Act. BW: 102# • Act. WW: 870#
EPDs CE 6.9 BW 3.8 WW 89.6 YW 138.7
MCE 5.8 MM 25.7 MWW 70.2 API 118.6 TI 77.3



EKR Custer 643L

LFE The Riddler 323B x CCE EKR Miranda 643D
ASA#: 4290188 • BD: 2/13/23 • PB SM • Act. BW: 102# • Act. WW: 822#
EPDs CE 7.6 BW 4.1 WW 96.9 YW 149.8
MCE 6.6 MM 19.5 MWW 67.7 API 125.1 TI 84.6



EKR Ranger 945L

DJF Palisades J170 x EKR Spider Woman 945G
ASA#: 4290322 • BD: 2/11/23 • PB SM • Act. BW: 88# • Act. WW: 840#
EPDs CE 9.5 BW 2.9 WW 100.8 YW 160.5
MCE 8.7 MM 20.3 MWW 70.4 API 126.8 TI 86.9

RAISING OUTCROSS PERFORMANCE SIMMENTAL GENETICS FOR OVER 50 YEARS!

EKSTRUM

RAISING
SIMMENTALS
SINCE 1970

EK
SIMMENTALS
& SIMM/GENETICS

EKSTRUM SIMMENTALS & SIMGENETICS

Clay Ekstrum: (H) 605-778-6185 / (C) 605-730-1511 | John Ekstrum: 605-778-6414
36220 257th St. Kimball, SD 57355 | Email: clayekstrum@midstatesd.net

Find us on Facebook: Ekstrum Simmentals

WWW.EKSTRUMSIMMENTALS.COM

South Dakota's source for outcross performance Simmentals specializing in red breeding stock

EPDs UPDATED 12/14/23

Videos online & live sale broadcast at www.dvauction.com

DVAuction
Auctioneering | Real Estate | More

44th Annual LaBatte Simmentals **BULL SALE**

WITH GUEST EAST POPLAR SIMMENTALS

BULLS SOLD IN OUR 2023 SALE



Friday

MARCH 1

2024

JOHNSTONE AUCTION MART, MOOSE JAW, SK

80

RED, BLACK &
FULLBLOOD BULLS

&

15

OPEN HEIFERS

ONLINE WITH

D|L|M|S
www.dlms.ca

FUNCTIONAL PRODUCTIVE PROFITABLE



Barry & Brenda LaBatte
Lynlee, Hayley, Brodyn, Jory
& Zayne LaBatte
Box 72, Gladmar, SK, S0C 1A0
Barry: 306.815.7900
Brodyn: 306.815.7804
labatte.simm@sasktel.net
www.LaBatteSimmentals.com



Kyron & Kelsey Manske
Box 456, Coronach, SK,
S0H 0Z0
306.267.7530
east.poplar@hotmail.com



BULL SALE

HIAWATHA, KANSAS



DIAMOND M CATTLE COMPANY



LiveOnline™

March 13, 2024

View Online & bid live!

MARK MUELLER 785 547 6054 • WWW.DIAMONDMCATTLE.COM  • MATT MUELLER 785 547 5505

WINTER MANAGEMENT OF HERD BULLS

By Madison Kovarna, SDSU Extension Beef Nutrition Field Specialist

Bulls are often a part of the cow herd that slips through the cracks during the winter months as breeding seasons come to a close. All things considered, the working season for a herd bull is relatively short, with an active breeding season of 60 to 90 days for most producers. When winter weather moves in, and the bulls are pulled from the cow herd, it is imperative to manage herd bulls properly to prevent frostbite of the testes and properly manage body condition score before the next breeding season. Bull management strategies during the winter months can impact a bull's performance in the upcoming breeding season.

Frostbite

Frostbite presents as a scab, discoloration, and/or sloughing of the bull's scrotum. These tissue damages limit or prevent the ability for a bull to regulate testis temperature. This is caused by the inhibition of the raising and lowering of the testes that occurs naturally. Come breeding season, this can result in a decrease in fertility. Dry areas to lay are important to consider when wintering bulls. These areas can be achieved by providing bedding or areas within a pasture that provide adequate cover from wind and snow. Wet and cold conditions increase the risk of frostbite.

Nutrition

Nutrition of bulls depends on a variety of factors, including age and weight loss that occurred over the breeding season. Mature bulls that are in good condition following breeding season can be managed on pasture or an all-forage diet without supplementation, as long as the forage contains 8 to 10 percent crude protein and is available daily at 2 percent of body weight. Yearling bulls following their first breeding season are still growing and require more energy and nutrients regardless of

Frostbite			
TABLE 1. EFFECTS OF FROSTBITE SEVERITY ON SEMEN QUALITY			
	FROSTBITE SEVERITY		
Breeding Soundness Score	Mild	Moderate	Severe
Satisfactory, %	89.5	48.0	2.1
Questionable, %	9.5	25.3	9.2
Unsatisfactory, %	1.0	26.7	88.7

Table 1 illustrates the effect of frostbite severity of semen quality. Adapted from G. Lardy, North Dakota State University

condition when compared to mature bulls. A ration developed for young bulls should target an average daily gain of 1.5 to 2.0 pounds dependent on weight lost during the breeding season. A diet crude protein of 10 to 11 percent should be targeted for young bulls. Regardless of diet available and the age of the bull, a good vitamin and mineral program should be followed.

Body Condition Score

At the beginning of the breeding season, ideally bulls should have a body condition score (abbreviated as BCS) of 6. This BCS allows for bulls to lose some weight during the breeding season without negatively impacting sperm quality. It is common for bulls to lose 100 to 200 pounds over the breeding season. In contrast, over-conditioned bulls are not able to efficiently do their job of breeding cows. At higher body condition scores,

Herd Bulls, Cont'd on Page 42



"Born in the Barn, Sold in the Barn" Sale

42nd Annual Production Sale

Saturday, February 3, 2024

Selling: **50** Yearling Simmental & SimAngus™ Bulls
10 Bred Registered Heifers
15 Open Registered Heifers

1 p.m. CST
 At the Ranch
 Ruso, ND

Auctioneer:
 Dustin Carter



#4275596
 API TI
 135.7 85.1

KSR ENTERPRISE 734L

Homo Bk • 3/4SM 1/4AN • Homo Pld • 2/26/23 • 90 lbs • 754 lbs
 OMF EPIC E27 x W/C UNITED 956Y
 CE BW WW YW MCE MM MW CW YG MB
 12.5 -2.3 79.4 118.8 8.3 24.1 63.6 37.9 -0.12 0.37



#4275593
 API TI
 151.5 92.9

KSR PIONEER 810L

Homo Bk • 5/8SM 3/8AN • Homo Pld • 2/14/23 • 65 lbs • 631 lbs
 CDI INNOVATOR 325D x LRS TOP TEN 104A
 CE BW WW YW MCE MM MW CW YG MB
 15.0 -2.0 81.6 129.9 9.4 22.3 62.9 51.9 -0.18 0.60



#4275598
 API TI
 156.2 90.3

KSR YUKON 1683L

Homo Bk • 1/4SM 3/4AN • Homo Pld • 2/26/23 • 88 lbs • 760 lbs
 TEHAMA TAHOE B767 x 787U
 CE BW WW YW MCE MM MW CW YG MB
 15.2 0.6 83.0 126.7 6.9 33.0 73.3 43.9 0.00 0.65



#4275594
 API TI
 110.1 84.8

KSR FIREBRAND 825L

Red • PB SM • Homo Pld • 3/1/23 • 100 lbs • 839 lbs
 SAS COPPERHEAD G354 x RFS CELEBRITY C87
 CE BW WW YW MCE MM MW CW YG MB
 4.4 3.8 101.7 149.4 1.6 30.7 81.3 37.7 -0.41 -0.08



#4275562
 API TI
 146.5 87.7

KSR CRUSADE 834L

Homo Bk • 3/4SM 1/4AN • Homo Pld • 2/20/23 • 80 lbs • 657 lbs
 OMF EPIC E27 x S A V FINAL ANSWER 0035
 CE BW WW YW MCE MM MW CW YG MB
 12.4 -0.5 83.9 129.4 5.0 27.2 69.0 23.7 -0.21 0.40



#4290703
 API TI
 130.0 86.6

KSR LILY 438L

Bk • PB SM • Pld • 2/21/23 • 85 lbs • 598 lbs
 KRJ DAKOTA OUTLAW G974 x KSR DELTA 486C
 CE BW WW YW MCE MM MW CW YG MB
 9.9 2.4 94.0 139.7 5.2 23.1 69.8 36.5 -0.46 0.08

Open House Bull Viewing: Jan. 27 and 28 • 11 a.m. to 4 p.m.

EPD as of 12-21-23

Visit our website at:
klainsimmentalandranch.com

Follow us:



52 Years Performance Testing



KLAIN SIMMENTAL RANCH

Durnell & Darcy Klain • Tyler & Carrie Klain • Dalcyce & Adam Balk • Trey & Kadey Klain
 Durnell: (701) 448-2408 • Trey: (701) 531-2008 • 1364 20th St NW • Ruso, ND 58778

27th Annual Bata & Bell Performance Sale

FEBRUARY 9, 2024

Rugby Livestock Auction
1:00 PM CST

DVAuction
Broadcasting Real-Time Auctions

SELLING:

100 Yearling Bulls • 25 2-Year-Old Bulls
60 Purebred Bred Heifers
60 Purebred Open Heifers
60 Commercial Bred Heifers • 40 Second Calvers



BBS L31

R+ Reddington X MRL Ringman
PB SM, ASA 4194654, Adj. WW 751
Red, Non-Dilutor



BBS L24

LFE The Riddler X Hart Road Warrior
PB SM, ASA 4194649, Adj. WW 838
Homo Black, Homo Polled



BBS L107

SKORS Blackjack X BBS True Justice
PB SM, ASA 4275876, Adj. WW 880
Hetero Black, Homo Polled



BBS L75

QB Marvel X LFE The Riddler
PB SM, ASA 4194670 Adj. WW 818
Homo Black, Homo Polled



BELL L45

MRL Bomber X Gibbs Raisincain
PB SM, ASA 4247566, Act. WW 804



BATA BROTHERS SIMMENTALS

6322 Hwy 35, Adams, ND 58210

Mark 701-331-3055

Joe 701-331-0344

Chris 701-331-0517



BELL SIMMENTALS

12787 County Rd 19A,

Fordville, ND

Travis 701-360-1597



BELL L70

Springcreek Mcdavid X LFE The Riddler
PB SM, ASA 4247591, Act. WW 865



BELL L81

Black Gold Witness X KWA Riddler
PB SM, ASA 4247598, Act. WW 792



BELL L178

Springcreek Mcdavid X MRL Bomber
PB SM, ASA 4252406, Act. WW 737

Over 40 years of Performance Genetics!
BATA BROTHERS SIMMENTALS



BATA BROTHERS SIMMENTALS

6322 Hwy 35, Adams, ND 58210

Mark 701-331-3055

Joe 701-331-0344

Chris 701-331-0517

**Bred and Open Heifer
 Complete Dispersal**

at the Bata/Bell Bull Sale

**THE
 COWS
 HAVE
 BEEN
 SOLD!**

FEBRUARY 9, 2024

Rugby Livestock Auction, Rugby ND



K215

Hart State of War X MLC Mr Justice
 ASA 4124969, Homo Black
 Bred to DKSR Prowler



K240

LFE The Riddler X RF Red Absolute
 ASA 4124991, Hetero Black
 Bred to TT Golden



K224

R+ Uppercut X LFE The Riddler
 ASA 4124979, Homo Black
 Bred to TT Golden



K297

SKORS Blackjack X KOP True North
 ASA 4125015, Non-Diluter
 Bred to DCR Mr Hard Impact



K232

R+ Uppercut X SprCrk Grand Slam
 ASA 4124986, Homo Black
 Bred to Gibbs Essential



K248

DCR Mr Hard Impact X SVS Brooks
 ASA 4124996, Non-Diluter
 Bred to Kuntz Sheriff



L309

R+ Uppercut X MLC Mr Justice
 ASA 4194616, Homo Black
 Open, Adj. WW 702



L3114

Rust Buster X SVS Brooks
 ASA 4194710, Non-Diluter
 Open, Adj. WW 789



L311

R+ Uppercut X Grand Slam
 ASA 4194632, Homo Black
 Open, Adj. WW 681



LARGE SELECTION. GUARANTEED. VALUABLE.

Offering 150 Top Tier Simmental and SimAngusSM Yearling bulls with added carcass and maternal values

53rd Annual Production Sale **AT THE RANCH, WESSINGTON, SD**

FRIDAY, MARCH 15, 2024



Rick, NaLani,
NaLea, Chase, & Swayzee Dunsmore
21830 372nd Ave., Wessington SD 57381
Home: 605-458-2425 • Rick cell: 605-354-7523
NaLani cell: 605-350-5216



John & Carly Christensen
Tyler, Cam, Law, Cecil & Kit Fagerhaug
37273 216th St • Wessington, SD 57381
Home: 605-458-2218 • John Cell: 605-350-1278
Tyler Cell: 605-280-1416 • Cam Cell: 605-350-2018

DECKERT

*Generations
of Genetics*

With over 50 years of experience raising Simmental genetics, we have pinpointed the traits that increase our customers' profit margin.

The balance of hybrid vigor, calving ease, fleshing ability and fertility complement and enhance any cow herd to produce calves that excel through all stages.

\$500 Sale Credit
Drawing
per buyer visiting
the ranch



EPD as of 12-12-23



#4213933 | Sire: ROCKIN H CAPTIVATE J75
Purebred Simmental | API: 153.4 · TI: 89.2
BW: 73 · 205 WT: 731 ET



#4213994 | Sire: MR SR RED OCTOBER G1761
3/4 SM 1/4 AR | API: 156.5 · TI: 91.1
BW: 83 · 205 WT: 770



#4213950 | Sire: GW HILGER ONE 454H
5/8 SM 9/32 AR 3/32 AN | API: 153.3 · TI: 94.2
BW: 86 · 205 WT: 796



#4213977 | Sire: ROCKIN H CAPTIVATE J75
Purebred Simmental | API: 149.2 · TI: 97.2
BW: 86 · 205 WT: 831



#4214062 | Sire: MR SR MIC DROP G1534
Purebred Simmental | API: 150.3 · TI: 90.0
BW: 83 · 205 WT: 801



#4085701 | Sire: HOOK'S DELEGATE 64D
3/4 SM 7/32 AR 1/32 AN | API: 141.2 · TI: 83.2
Service Sire: Redhill Burley 99J

Request
a Catalog



Annual Production Sale

Tuesday, February 27, 2024

New Location!

Sale: 2 p.m. CST · At the Ranch

35 Yearling Bulls · 4 2-Year-Old Bulls · 25 Bred Heifers



DVAuction Broadcasting
Real-time Auctions

DECKERT
Simmental Ranch

Justin and Carrie Deckert:
(701) 943-2477
Jaxon Deckert: (701) 425-5882
24952 392nd St NE · Arena, ND 58494
dsrccows@bektel.com

PAW **JUAN PABLO**^{121J}

GRAND CHAMPION SIMMENTAL BULL
AT FARMFAIR INTERNATIONAL



SONS FROM THESE CHAMPIONS WILL SELL IN OUR

20th *Annual Bull Sale*
MARCH 21, 2024

WHEATLAND

DIMENSIONAL^{1147J}

NATIONAL CHAMPION SIMMENTAL BULL
AT BRANDON AG EX



SIMMENTAL » ANGUS » TRUE F1'S » $\frac{3}{4}$ & $\frac{7}{8}$ SIMM » CALVING EASE » POWER BULLS » BALDIE BULLS

Wheatland
Cattle Co.

Vernon, Denise, Riley & Cody-Ray Lafrentz
Box 118, Beinfait, SK S0C 0M0
C: 306-421-2297
Riley: 306-461-8200
Cody-Ray: 620-960-9831

Wheatland
Michelson

Shane, Alaina, McKenna &
Kaden Michelson
C: 403-363-9973

**Bulls should
be housed in
a pen large
enough to allow
for adequate
exercise.**

Herd Bulls, Cont'd from Page 34

fat deposition within the scrotum increases, resulting in poorer thermoregulation of the testes. This reduction in temperature regulation decreases overall sperm quality. To prevent last-minute efforts to improve condition score, producers should evaluate their bull's BCS 90 to 120 days prior to turnout to provide adequate time to improve or decrease body condition if necessary.

HOUSING AND EXERCISE

Bulls should be housed in a pen large enough to allow for adequate exercise. Additionally, a large pen allows for the less-dominant bulls to move away from more-dominant bulls. Bulls will fight to determine social ranking; however, providing space for animals to get away from each other may reduce injuries. If bulls are being fed at the same time, 24 to 30 inches of feeder space should be provided per head to allow access for all animals and lessen incidences of fighting. It is important to provide room for exercise to keep bulls in shape for the next breeding season. If proper exercise is not permitted, bulls can lose their endurance and struggle to keep up in the beginning of the breeding season, resulting in a potential reduction of cows bred during the beginning of the season. Exercise can be encouraged by placing feed and water on opposite ends of the pasture. Ideally, the winter housing area would be located away from cows to allow bulls to fully focus on eating and other behaviors rather than breeding cows.

Our Long-Term Commitment To Powerful Genetics

starts with productive dams and sires like these!



L637 Sells Feb. 2!

TRAX' S BULL DOG G49 X IPU RED ZONE 82Y
ASA# 4244580 • Adj. WW 730 • Homo Polled



L665 Sells Feb. 2!

BRIDLE BIT RED ROCK G9124 X TRAX'S BULL DOG G49
ASA# 4244607 • Adj. WW 743 • Homo Polled



L617 Sells Feb. 2!

BRIDLE BIT RED ROCK G9124 X TRAX'S BULL DOG G49
ASA# 4244560 • Adj. WW 711 • Homo Polled



L682 Sells Feb. 2!

TRAX' S BULL DOG G49 X HOOK'S DELEGATE 64D
ASA# 4244624 • Adj. WW 815 • Homo Polled



L685 Sells Feb. 2!

IPU RAWHIDE 59J X LFE RED RIDGE 809W
ASA# 4244627 • Adj. WW 790 • Homo Polled



L717 Sells Feb. 2!

IPU RAWHIDE 59J X IPU RED ZONE 82Y
ASA# 4244659 • Adj. WW 714 • Homo Polled



L606 Sells Feb. 2!

KESSLERS COMMODORE 6516 X BBS BATMAN F4
ASA# 4244549 • Adj. WW 817 • Homo Black/Homo Polled



L766 Sells Feb. 2!

MRL GUNSMOKE 38H X IPU GLADIATOR 151C
ASA# 4244708 • Adj. WW 835 • Homo Black/Homo Polled



L743 Sells Feb. 2!

MRL GUNSMOKE 38H X HOOK'S BLACK HAWK 50B
ASA# 4244685 • Adj. WW 781 • Homo Black/Homo Polled

Call to be added to our mailing list and to request a catalog!

Dusty & Kayla Kunkel, New Salem, ND
(701) 471-5342 • (701) 843-7006

Follow us on: / Kunkel Simmentals

E-mail: kdkunkel@westriv.com • Visitors always welcome!

Kunkel Simmentals
DKSR

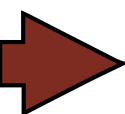
Annual Production Sale

Feb. 2, 2024

At the Ranch • New Salem, ND • 1 P.M. CST

65 BULLS • 50 BRED HEIFERS

BREEDING FOR THE FUTURE



WILKINSON FARMS SIMMENTALS

FEBRUARY 15, 2024 1:00 PM CST AT THE C-B SALE FACILITY
4 MILES SOUTH OF THE RANCH, MONTPELIER, NORTH DAKOTA
26TH ANNUAL PRODUCTION SALE



4L ASA 4231690
PB SM Red, Homo Polled
3C HARMONY 0575H B x WS MISS HONEY H72

\$API 161 - \$TI 98



40L ASA 4231650
PB SM Homo Black, Homo Polled
WS ENHANCEMENT 25H x WS MAINE H49

\$API 170 - \$TI 106



45L ASA 4231762
PB SM Red, Homo Polled
BAR CK ADMIRAL 0053H x WS HONEYCOMB J57

\$API 156 - \$TI 98



50L ASA 4231653
PB SM Homo Black, Homo Polled
WS JESSE JAMES 31J x HOOK `S GORMET 69G

\$API 189 - \$TI 99



6L ASA 4231720
PB SM Red, Homo Polled
WS 38 SPECIAL 20H x WS UPDRAFT J15

\$API 142 - \$TI 92



1L ASA 4231830
SimAngus Homo Black, Homo Polled
CLRS GUARDIAN 317G x BAR CK MS 6225 911Z

\$API 178 - \$TI 96



L2 ASA 4231604
PB SM Red, Homo Polled
MR SR RED OCTOBER G1761 x WS FAST FORWARD J30
Sells open

\$API 193 - \$TI 108



K146 ASA 4117889
PB SM Hetero Black, Homo Polled
3C HARMONY 0575H B x WS ELITE E65
Bred to Bridle Bit Herschel

\$API 143 - \$TI 97



K63 ASA 4070953
PB SM Red, Homo Polled
9 MILE ABUNDANCE 7507 x WS GLOW G25
Bred to CLRS Kerosene

\$API 133 - \$TI 91

60 SIMMENTAL AND SIMANGUS™ BULLS

SELECT OPEN HEIFERS - 25 BRED FEMALES



DVAuction
Broadcasting Real-Time Auctions

TERRY AND CATHY SCHLENKER FAMILY MONTPELIER, NORTH DAKOTA www.wilkinsonfarmssimmentals.com
Terry 701-320-2171 - Aaron call/text 701-269-8271 - Jordan 701-320-1895 - eatbeef@daktel.com

Marty Ropp 406-581-7835
Corey Wilkins 256-590-2487
Jared Murnin 406-321-1542

ALLIED
GENETIC RESOURCES
alliedgeneticresources.com

Brink

Simmentals

FULLBLOOD FLECKVIEH CATTLE, EMBRYOS, AND SEMEN AVAILABLE

SELLING: ELITE FULL FLECKVIEH
YEARLING BULLS
AND FEMALES

**SALE DATE:
MARCH 14TH
2024**

EXPLOSIVE PERFORMANCE AND PROFIT



**HORNED, POLLED AND DILUTER FREE
34TH YEAR OF SELLING FULLBLOOD FLECKVIEH
100% DNA TESTED WITH GENETIC ENHANCED EPDS
THANK YOU TO ALL OF OUR 2023 CUSTOMERS (91% REPEAT)**

**ALL BULLS SOLD BY PHONE AUCTION
CALL US TO REQUEST A CATALOG BY MAIL. PERFORMANCE AND ULTRASOUND
DATA AVAILABLE ON ALL BULLS. PICTURES, VIDEOS AND ONLINE CATALOG
AVAILABLE BEGINNING IN FEBRUARY ON OUR WEBSITE: BRINKGENETICS.COM**

**CUSTOMERS
SELLING MORE WEIGHT IN
THEIR MARKET WINDOW
= MORE MONEY**

**23098 GUNDER RD., ELKADER, IA 52043 • BRINKGENETICS.COM
JERRY - 563-245-2048 OR 563-880-1470 CELL • JBRINK@ALPINECOM.NET
PRESTON - 563-880-2075 • PRESTONBRINK@GMAIL.COM**

FEEDING CORN SILAGE TO CATTLE CAN ADD VALUE

CORN SILAGE COULD MAKE UP 40% TO 60% OF DIET DRY MATTER AND STILL BE ECONOMICAL.

By now, corn silage harvest has finished across North Dakota. In well-packed, covered corn silage piles, the fermentation process to preserve the silage will be complete after about three weeks. This means that most of this year's silage crop is ready to feed to cattle. While ranchers may be able to calculate the input costs or the price of selling the corn silage to another producer, it pays to consider the value of feeding corn silage to their own cattle.

"Corn silage has significant value for cow-calf, backgrounding and feedlot operations," says Zac Carlson, North Dakota State University Extension beef cattle specialist. "Silage is an excellent energy source, providing digestible

fiber while improving the palatability and conditioning of the diet with added moisture."

The tonnage of corn silage harvested and cattle inventory throughout the year often dictate the inclusion level in backgrounding and finishing diets. A survey of farmers and ranchers of the Northern Plains and Midwest reported that the average inclusion of corn silage on a dry matter basis was between 17.1% and 22.2% in backgrounding diets and between 5.4% and 11.4% in finishing diets. However, a summary by the University of Minnesota suggested that corn silage could make up 40% to 60% of diet dry matter and still be economical.

A summary of five experiments by the

University of Nebraska evaluated the inclusion of 15% or 45% dry matter corn silage in finishing beef cattle diets. They reported that cattle consumed the same amount of feed dry matter regardless of corn silage inclusion level, but cattle fed 45% corn silage gained 0.2 pound less per day, leading to a 6% poorer feed conversion than cattle fed 15% corn silage.

Corn prices have generally been more expensive in the past few years. Replacing a larger portion of corn in beef cattle diets with corn silage may be an economical solution. However, cattle may need to be

Silage, Cont'd on Page 50



TNT

SIMMENTALS

39TH ANNUAL "CARRYING ON" THE EXPLOSIVE DIFFERENCE SALE

Friday, **FEBRUARY 9, 2024**

1 p.m. CST • At the ERBELE RANCH, Lehr, ND

Your **COMMERCIAL BULL HEADQUARTERS**, along with **BREED-LEADING HERDSIRES!**
They are **THICK and DEEP** – All backed by the **TNT 100% GUARANTEE!**

DVAuction Broadcasting Real-time Auctions

Selling
120 Bulls

Purebred Black Sim
3/4, 1/2 & 1/4
SimAngus™

Purebred Red Sim
3/4, 1/2 & 1/4
SimAngus™

Purebred
Red Angus



Millars Duke 816 x Herbster West River 5158
13 Brothers Sell!



Rockin H Captivate J75 x CDI Perspective 238A



TNT Convergence F380 x G A R Prophet
3/4 Brother to 2023 High Seller!



TNT Royalty H335 x LMG Gills Indeed 4736



Connealy Craftsman x WBF Significant B132
Multiple Flushmates Sell!



Bridle Bit Efficient J160 x IR Imperial D948
Multiple Red Hooks Eagle Grandsons Sell



Gibbs 7056E Southern Comfort x TNT Pride C232



GW Hilger One 454H x LMG Gills Indeed 4736



TNT Assurance J455 x Rymo Extra Up U60D
12 Brothers Sell!

TNT

SIMMENTAL RANCH

Shanon & Gabe Erbele

6471 51st Ave SE • Lehr, ND 58460

(701) 527-5885 (Shanon's cell)

(701) 426-9445 (Gabe's cell)

gserbele@hotmail.com

Kevin & Lynette Thompson

5125 53rd St • Almont, ND 58520-9731

(701) 391-1631 (Kevin's cell)

(701) 843-8454

kevinandlynette@westriv.com



Contact us
for a *catalog!*

- Volume discounts!
- Performance data and genomic-enhanced EPD!
- No creep feed!
- Majority homozygous polled!
- All reds are non-diluters!
- All blacks will be homozygous- or heterozygous-black verified!

Bulls viewable anytime at the **Erbele Ranch**, 30 m. S of I-94 Exit 228 • Videos & photos at tntsimmentals.com and DVAuction.com

Lazy C Diamond RANCH

FEBRUARY 7TH, 2024

1 PM CST @ THE RANCH - KINTYRE, ND

65 RED & BLACK SIMMENTAL BULLS - SELECT FEMALE & EMBRYO LOTS

PRE-SALE VISITORS ARE ALWAYS WELCOME & RECEIVE \$1000 OFF A BULL PURCHASE
VOLUME DISCOUNTS & BEGINNING RANCHER DISCOUNTS



WATCH FOR OUR UPCOMING WINTER EMBRYO SALE
ON SC ONLINE MID JANUARY!



LCOR 166L API: 140 TI: 97
Homo Black Homo Polled PB
Impact x LCOR Ms Eleonora 41E



LCOR 161L API: 152 TI: 91
Homo Black Homo Polled PB
Need4Speed x WS Miss Sugar C4



LCOR 163L API: 161 TI: 106
Homo Black Homo Polled PB SM
Innovator x WS Miss Sugar C4



LCOR 189L API: 148 TI: 87
Red Homo Polled PB
Captivate x CDI Ms Beef King 11Z



LCOR 174L API: 161 TI: 91
Red Homo Polled PB
Captivate x LCOR Ms Joyride 63J



LCOR 167L API: 180 TI: 86
Red Homo Polled PB
Net Income x CDI Miss Verdict 172C



LCOR 157L API: 180 TI: 103
Homo Black Homo Polled 3/4 SM
Homeland x WS Miss Sugar C4

Selling Choice of the 8026 Captivate daughters



LCOR Ms Lark 94L API: 160 TI: 96
Red Homo Polled Purebred
Captivate x HHS Georgia 802G

Pick of the 8362 daughters, well yell!



LCOR Ms Lizbeth 67L API: 163 TI: 99
Homo Black Homo Polled 5/8 SM
Homeland x HHS Miss 836Z

SALE AT THE RANCH! 10752 BIA ROAD 15, VEBLEN, SD

24th Annual ★ ★ ★ ★
**KING OF THE
RANGE
PRODUCTION SALE**

**THURSDAY,
FEBRUARY 1, 2024**

1:00 P.M. CST • At the Ranch
10752 BIA Road 15, Veblen, SD

DVAuction

**Selling 100 Simmental Bulls
— 80 Black & 20 Red —**

OTHER SIRES REPRESENTED:

LCDR AFFIRMED 212H • STAV RED WAVE 105F

HHS BOBBY 847F • HOOK'S EAGLE 6E

CLRS CENTER MASS 8103J • STAV CONVOY 106J



OMF EPIC E27



WHEATLAND MAN O' WAR 907G



WLB PRODIGY 493H



KBHR HARTLAND H100



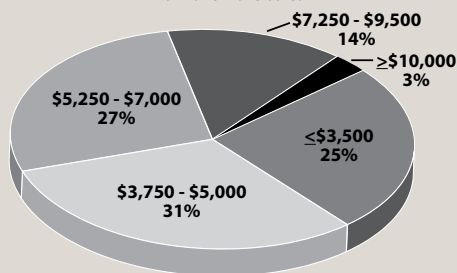
GW HILGER ONE 454H



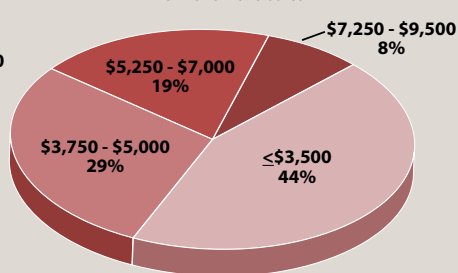
CLRS BUDDHA 406J

COMMERCIALLY PRICED

Black Bull Price Average
for 2018-2023 sales



Red Bull Price Average
for 2018-2023 sales



*Commercial
cattlemen's source
for functional,
honest and
problem-free cattle*

STAVICK SIMMENTAL



Mike, Myra, Owen and Liv Stavick
10752 BIA Road 15, Veblen, SD

605-237-4663 (Mike) • 605-551-9016 (Owen)

stavicksim@gmail.com • stavicksimmental.com



Silage, Cont'd from Page 46

fed longer and to heavier weights to reach similar carcass endpoints.

"These decisions should be evaluated as the value of gain versus the cost of gain," says Karl Hoppe, NDSU Extension livestock systems specialists. "The economics can get complicated and should be evaluated by each individual operation."

As with all feeds, managing corn silage to minimize shrink is critical.

"Depending on the storage structure you are using, corn silage should be harvested at 65% to 70% moisture for optimum results," Hoppe says.

Moisture levels that are too low result in less favorable fermentation and poor packing characteristics in the silage, whereas moisture levels that are too high result in silage that has greater effluent losses (loss of nutrients in the water that oozes from the pile). High moisture levels also can result in a "sour" fermentation.

Hoppe also advises packing the silage correctly to ensure oxygen is driven out.

Excluding oxygen is a very important aspect of making good-quality silage.

Adequate packing involves a number of factors, including the correct chop length for a particular silage crop and having the appropriately-sized tractor for the amount of silage being placed in the pile. Because wheeled tractors exert more pressure per square inch than crawler or track-type tractors, wheeled tractors are preferred for packing silage.

Poorly managed corn silage that spoils will lose dry matter, requiring the cattle feeder to use additional feed resources to account for lost feed. Making and feeding silage affects shrink, including dry matter at harvest, chop lengths, bunker or drive-over pile filling and packing, inoculation, covering, and feedout.

"Most producers realize the potential benefits of covering silage bunkers and drive-over piles to reduce dry-matter losses and spoilage," says James Rogers, NDSU Extension forage crops production

specialist. "Reasons corn silage bunkers and piles are left uncovered usually include a lack of adequate labor and available time for the task. However, often forgotten is the practice of discarding spoiled silage during feedout. This step is critical when evaluating the feeding value of your silage and the cattle's performance."

Only a few studies have evaluated the effects of feeding spoiled silage to cattle. A study by Whitlock and others in 2000 at Kansas State University measured the effect of feeding surface-spoiled (black slime and gray mold material) corn silage to beef cattle. Adding spoiled corn silage to the diet depressed dry-matter intake and decreased crude protein digestibility. Similarly, dry-matter and fiber digestibility decreased with feeding spoiled silage.

"If there is one thing you remember, don't feed spoiled silage," Carlson says. "Even if you think the small amount of spoiled silage will be diluted in the diet, it may cost you more than you know."



TSN SIMMENTALS

Annual Bull Sale

FEBRUARY 27
PLATTE, SD
1 PM Platte
 Livestock
 Market



L118

CE	YW	STAY	MARB	RE	SAPI	STI
17.4	126.9	16.4	0.78	0.99	173.5	97.1

ASA 4270634 - 3/4 SM 1/4 AN - KBHR HONOR H060 SON



L012

CE	YW	STAY	MARB	RE	SAPI	STI
13.4	131.8	14.1	0.76	0.83	159.7	96.5

ASA 4270581 - 5/8 SM 3/8 AN - TSN ARCHITECT J618 SON



L132

CE	YW	STAY	MARB	RE	SAPI	STI
16.3	120.6	15.4	0.68	0.74	171.2	97.8

ASA 4270647 - PB SM - FP/L JURISDICTION 103J SON



L108

CE	YW	STAY	MARB	RE	SAPI	STI
6.0	155.2	19.7	0.63	1.05	168.3	105.5

ASA 4270624 - PB SM - CLRS GUARDIAN 317G SON



L925

CE	YW	STAY	MARB	RE	SAPI	STI
10.1	158.0	15.4	0.41	1.23	154.5	101.6

ASA 4270903 - PB SM - HOOK `S EAGLE 6E SON



L412

CE	YW	STAY	MARB	RE	SAPI	STI
13.2	133.9	20.3	0.56	1.13	174.0	100.6

ASA 4270723 - PB SM - LBRS GENESIS 669 SON

65 Simmental AND
 SimAngus™ Bulls

TSNSIMMENTALS.COM

TSN SIMMENTALS
 Tim and Sandy Naasz PLATTE, SD
 c. 605-207-0229 h. 605-337-3503

alliedgeneticresources.com

Marty Ropp 406-581-7835
 Corey Wilkins 256-590-2487
 Jared Murnin 406-321-1542

DVAuction
 Broadcasting Real-Time Auctions

ALLIED
 GENETIC RESOURCES

THE AMERICAN SIMMENTAL ASSOCIATION WELCOMES DR. KEN ODDE AS A SIMSPECIALIST



Dr. Ken Odde

The American Simmental Association (ASA) is fortunate to have a team of beef industry professionals, with a wide variety of experience, available to represent the

Simmental breed. The ASA Educational Specialists or “SimSpecialists” team covers the US attending sales, presenting at educational events, and serving as a resource for seedstock and commercial breeders alike.

Many of the SimSpecialists have storied histories working around the country in all aspects of the beef industry — we have nutritionists and reproductive physiologists, all the way to meat scientists on the team. Many are professional educators, and all are well-known throughout their state and region for being experts in beef cattle production; however, the team’s expertise doesn’t come only with retired university faculty. We have folks who ranch full-time and can understand the day-in and day-outs of our membership and the challenges they face.

Recently Dr. Ken Odde was added to the team of SimSpecialists for the North and South Dakota area. Dr Odde is no stranger to the Dakotas and will be an asset to

the Simmental breeders in the Northern Plains. Welcome Dr. Ken Odde

Longtime educator and producer Dr. Ken Odde received a bachelor’s in animal science at South Dakota State. After a two-year stint in the US Army as an officer and platoon leader, he received a master’s degree in reproductive physiology, a doctorate of veterinary medicine, and a doctorate in physiology at Kansas State University (KSU). Odde taught at Colorado State University for 11 years, conducting research on beef cattle reproduction and health. He then returned to South Dakota, working for Pfizer Animal Health for six years, and AgSpan for three.

Odde joined North Dakota State University in 2003 as head of the animal and range sciences department. He soon became the director of Beef Systems—Center of Excellence, which is a public-private partnership designed to grow cattle feeding and processing in North Dakota. In 2007 he became the animal

sciences and industry department head at KSU; Odde recently retired from that role.

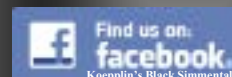
In 1996, Odde and his wife, Arlene, purchased land in Pollock, South Dakota, which the family has since grown into a sizable commercial cow-calf operation. Today, they run 500 head of commercial SimAngus cows; Odde’s son John manages the ranch. In 2014, the family started an internship program to provide students with cattle experience.

Odde has been involved with the Simmental breed for many years, participating in research, interviews, and industry events, and will be a valuable member of the SimSpecialists team.

SIM SPECIALISTS	AREA	RADIUS
Dr. Ken Odde	Pollock, SD	250 miles
Russ Danielson	Valley City, ND	250 miles
Perry Thomas	Bismarck, ND	250 miles
Dr. Andy Roberts	Kinsey, MT	250 miles
Bill Zimmerman	Foley, MN	250 miles
Gary Burns	Pendleton, SC	250 miles
Dr. Michael Dikeman	Manhattan, KS	250 miles
Susan Russell	Sugar City, CO	250 miles
Dr Bert Moore	Indianola, IA	250 miles
Brian DeFreese	West Lafayette, IN	250 miles
Ben Spitzer	Texas	250 miles
Dr. Ashby Green	Gainesville, FL	250 miles



Black Simmental & SimAngus™



36th Annual Production Sale

Selling 62 Yearling Bulls



608L
Purebred

CCR Wide Range 9005A x Triple C Bettis S72J

BD: 2-9-23 BW: 83 WW: 832

CE	BW	WW	YW	MCE	Milk	MWW	API	TI
14.1	0.3	85.0	126	6.7	17.1	59.4	139	82

KOEPLIN'S BLACK SIMMENTALS

Tuesday, February 6, 2024

2:00pm CT • Kist Livestock • Mandan, ND



429L
¾ SM ¼ AN

MRL Battlerey 2G x S A V Angus Valley 1867

BD: 2-16-23 BW: 94 WW: 886

CE	BW	WW	YW	MCE	Milk	MWW	API	TI
10.7	2.6	85.3	128	6.5	28.3	70.7	127	80

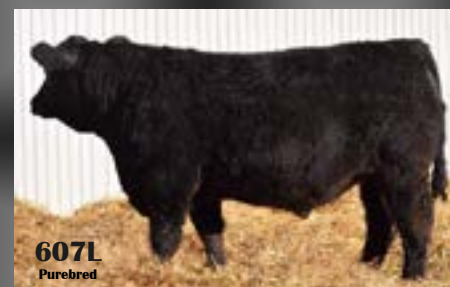


922L
Purebred

MRL Discovery 21A x GW-WBF Substance 820Y

BD: 2-14-23 BW: 96 WW: 784

CE	BW	WW	YW	MCE	Milk	MWW	API	TI
10.2	1.8	75.8	122	8.2	20.0	57.7	120	76



607L
Purebred

CCR Wide Range 9005A x MRL Discovery 21A

BD: 2-9-23 BW: 80 WW: 876

CE	BW	WW	YW	MCE	Milk	MWW	API	TI
11.9	1.4	87.2	136	7.0	18.7	62.1	137	83

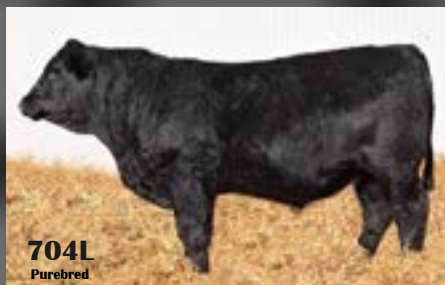


940L
¾ SM ¼ AN

MRL Discovery 21A x Connealy Right Answer 746

BD: 2-18-23 BW: 97 WW: 964

CE	BW	WW	YW	MCE	Milk	MWW	API	TI
10.7	1.7	76.9	125	7.8	24.8	62.8	126	77



704L
Purebred

TJ Gold 274G x GW-WBF Substance 820Y

BD: 2-7-23 BW: 90 WW: 869

CE	BW	WW	YW	MCE	Milk	MWW	API	TI
11.1	0.7	80.4	121	5.5	24.6	64.5	149	88



506L
¾ SM ¼ AN

CCR Cowboy Cut 5048Z x Connealy Right Answer 746

BD: 2-7-23 BW: 94 WW: 926

CE	BW	WW	YW	MCE	Milk	MWW	API	TI
12.1	2.0	94.2	141	7.6	26.2	72.8	149	91

Planned Mating EPDs as of 12/15/23

Terry & Marci Koeplin

7035 80th St SW • Elgin, ND 58533

Home: 701-584-3292 • Cell: 701-214-8212

koeplinranch@hotmail.com

Visitors are always welcome at the ranch!

Where Friends Meet...

Sale will be broadcast for online bidding by



Selling 150 Black Simmental, SimAngus™ and Angus Bulls



Wednesday, February 7, 2024 • 12:30 PM – At the Ranch – Wibaux, MT



Two-year-old heifer



Sensibly sized and efficient

30 Purebreds, 105 SimAngus™, 15 Angus Sell.
50 are 18-month-old fall-borns, ALL ARE Black and
Polled, most are homozygous black and polled.

COW EFFICIENCY AT ITS FINEST:

The basis of any good breeding program is the mother cow. Our motto is: **"THE RANCHER COMES FIRST."** Every breeding decision we make is to improve our customer's bottom line. BEGGER'S DIAMOND V RANCH provides the perfect blend of COW SENSE, COMMON SENSE and SCIENCE. We know the value of a good mother cow; she must be fertile, efficient and problem-free. She must have the staying power to produce a valuable calf year-after-year on her own, with no extra assistance in the environment mother nature provides. She must possess a low-maintenance, easy-fleshing body type that requires little or no extra input. She has to have a problem-free udder and have a good gentle attitude with a set of feet and legs that will serve her until she exits your program at a ripe old age.

- ❖ We are your source for homozygous black and polled Simmental, SimAngus™, Angus genetics, the top 150 bulls out of 275 sell.
- ❖ Many ½ & ¾ brothers sell in volume enabling you to assemble like bred genetics that are predictable and consistent.
- ❖ From a program that does the day-to-day work. We calve, feed, and work around our cattle every day, so we know our cows if they become problematic. They won't see next year and their only way out is through a packing plant.
- ❖ We are straight shooters. We honestly try to answer and meet our customer's questions, needs and concerns. Our bulls come with a complete 100% satisfaction warranty. If there is a problem we will make it right.
- ❖ We provide free bull keep until April, along with a free breeding soundness exam and free delivery, for the first 500 miles on purchases over \$5,000.
- ❖ Every bull walks through the sale ring enabling you to see what you are buying. Some pictures and videos just don't represent cattle as they should.

Raising cattle that work for the cow-calf producer, the feeder, and the packer, while providing an enjoyable eating experience for the consumer should be every cattle producer's goal. Ranchers work hard and should expect their cattle to do the same. There are no shortcuts with today's high inputs; your cattle have to be profitable and efficient. Blending EPD and genomic traits requires discipline, common sense, and patience. It doesn't matter how impressive the EPD are or the size of calf at weaning. Cattle that lack efficiency and require extra labor and costly inputs are not desirable. This is why common sense and an experienced eye still play a major role in every breeding decision we make.

EXTREMES ARE EASY TO ACHIEVE. BALANCE TAKES DISCIPLINE, PATIENCE, AND A LIFETIME OF EXPERIENCE TO PERFECT.



Look for us on Facebook



Bill Begger: 406-796-2326 / John Begger: 406-956-0151
darbegger@gmail.com / 482 Custer Trail Road / Wibaux, MT 59353

beggersdiamondvranch.com

E Eichacker Simmentals



Celebrating

50 YEARS

with the American Simmental Association!

SAVE THE DATE: FRIDAY, MARCH 1ST • 12:00 NOON

2024 ANNUAL PRODUCTION SALE AT THE EICHACKER SIMMENTAL FARM • SALEM, SD



Steve & Cathy Eichacker Home 605-425-2391 Cell 605-421-1152 • Adam Eichacker 605-421-0554

Guest Breeder: JK Angus, Jeff Kapperman 605-940-5104

*Contact us for information and to be
included on our catalog mailing list!*

Sale Managers: Eberspacher Enterprises Inc. 507-532-6694 • Val Cell 612-805-7405 • sales@ebersale.com • Catalog will be online at www.ebersale.com

IGS GENETIC EVALUATION UPDATES FROM THE IGS SCIENCE TEAM

Reprinted with permission from www.simmmental.org

Continuing to improve genetic predictions is one of the main goals of the International Genetic Solutions (IGS) genetic evaluation. Over the last year, several updates to models used in the weekly genetic evaluation have been investigated to be incorporated into the weekly genetic evaluation. As the IGS genetic evaluation has grown and expanded from historical partners, as well as the addition of new partners, the ability to run genetic evaluations within a week's time frame has become difficult. One of the main goals of these updates was to increase the efficiency of evaluations; however, these upgrades are also to maintain or improve the accuracy of prediction of each evaluation. To account for these challenges, three evaluations recently underwent updates, which are detailed below.

Growth Evaluation: The growth evaluation produces EPD for Birth Weight, Weaning Weight, Yearling Weight, Average Daily Gain, Milk, and Maternal Weaning Weight. We updated the way that breed and years are incorporated into the genetic evaluation, and the method used to incorporate information from other genetic evaluations. Previously, breeds and years were incorporated by fitting interactions of these effects for each animal; with the updates, these effects are separated. For the incorporation of information from outside genetic evaluations, IGS will now use a new method that allows for better tracking of the changes that occur to EPD when this information is added to the evaluation.

Carcass Weight and Ribeye Genetic Evaluation: The CW/REA updates now include the updates described above for the growth evaluation, as well as updated across-breed adjustments from the US Meat Animal Research Center (USMARC)

Germplasm Evaluation (GPE) program. This program helps to determine breed differences and is an important part of the carcass

evaluations at IGS.

Marbling and Backfat Genetic Evaluations: These updated breed differences will also be applied in the Marbling and Backfat genetic evaluations, which is the third evaluation. The updated across-breed adjustments from USMARC is the only change to the Marbling and Backfat evaluation.

RESULTS OF THE UPDATES TO GENETIC EVALUATIONS

When implementing updates to genetic evaluation, the IGS team undergoes a strict validation procedure to evaluate how potential changes will influence the predictive ability of the updated EPD. One of the most common ways this is done is by excluding a portion of the phenotypes, running an evaluation, and correlating the EPD from this run with the excluded phenotypes. For each of the evaluations, all animals that were born after 1/1/2020 were removed from the evaluation and used to test the predictive ability. The results for these comparisons are included in the table below.

Pearson correlation between parental average EPD and excluded phenotypes from animals in the IGS genetic evaluation that were born in 2020 or later.

Trait	Updated Evaluation	Previous Evaluation
BW	0.57	0.48
WW	0.41	0.39
YW	0.50	0.45
CW	0.16	0.14
REA	0.38	0.36
Marb	0.33	0.33
BF	0.26	0.25

The results in the table above show that the implemented updates had the same or higher correlations than the previously implemented models. This would correspond — in most cases — to more accurate EPD for each of the traits. With the updates, some breeders may notice that the resulting EPD for animals may change, but the percentile rank for the trait may be similar. This is due to differences in estimated breed effects as part of the evaluation. While most traits will have strong EPD correlations between the previous and current evaluation, some animals may have been re-ranked because of these updates.

For current EPD and percentile ranking of animals please visit Herdbook.org. For information, or if you have questions about these updates, please contact Lane Giess, ASA Geneticist, at lgiess@simmgene.com.

TRAXINGER

SIMMENTALS

Bull Sale

FEBRUARY 14, 2024

1 p.m. • At the Ranch • Houghton, SD

50 Simmental & SimAngus™ Bulls



 **RODE POWER HOUSE • ASA#: 3648400**



 **ROCKIN H CAPTIVATE J75 • ASA#: 3991776**



 **KBHR HONOR H060 • ASA#: 3789447**



 Selling several red & black ET sons out of **MISS TRAX B479**



 **COLORADO BRIDLE BIT • ASA#: 3271382**



Contact us for a catalog or more information!

MIKE & TERRI TRAXINGER • 605-294-7227

MICHAEL TRAXINGER • 605-377-4110

E-mail: mtrax@nvc.net

www.TraxingerSimmental.com

DVAuction
Exclusively Selling Real Estate Auctions



AM I FULL OF CRAP?

Calf scours are not inevitable. A strong prevention program is non-negotiable. Dependable scour prevention is essential for calf welfare, employee morale and business profitability. The immune system's response to vaccination is variable and unpredictable. That's why giving preformed antibodies instead of relying on a vaccine to stimulate antibody production is so important. I'm all for removing uncertainties. So yes, I stand by this product. (And no, I'm not.)

Learn more at
FirstDefenseCalfHealth.com

Marissa Hake, DVM
Calf Vet

© 2020 Immucell Corporation. All Rights Reserved.



**THE BEST VACCINE FOR SCOURS,
ISN'T A VACCINE.**



QUANDT CATTLE CO. 12th Annual

PRODUCTION SALE 2.20.24

AT OUR NEW SALE FACILITY | 10861 88TH ST. | OAKES, ND

2023 HIGH SELLERS



QB SPECIAL OPS K11
REG #: 4117080 | PB SIMMENTAL
ASSULT X QB MS G906
Sold to HANSEN SIMMENTAL RANCH



QB DISCOVERY K49
REG #: 4117056 | 5/8 SM 3/8 AN
LAST FRONTIER X SYS MS SANTA FE E57
Sold to TRIPLE H SIMMENTALS & MARTIN SIMMENTAL



QB QUANTIFY K52
REG #: 4117066 | PB SIMMENTAL
BENCHMARK X QB MS E781
Sold to TNT SIMMENTALS

LUNCH SERVED AT 11 AM CST | BROADCAST ON DVAUCTION

KU QUANDT
CATTLE CO.

JASON QUANDT 701.710.0080 | GABE QUANDT 701.408.9154

WWW.QUANDTBROTHERS.COM

HART **SIMMENTALS**

JOIN US FOR OUR 49TH ANNUAL SALE
WEDNESDAY, FEBRUARY 21, 2024



HART MAJOR LEAGUE 169L

4205030 - HOMO BLACK, HOMO POLLED
 BW - 83 ADJ WW - 858
 CDI MAJOR IMPACT 280H x DKSR HOLLOW POINT C66



HART FLAT LINE 192L

4204996 - HETERO BLACK, HOMO POLLED
 BW - 90 ADJ WW - 826
 HART CODE BLACK 034J x WS REVIVAL



HART STARBURST 179L

4205027 - HOMO BLACK, HOMO POLLED
 BW - 87 ADJ WW - 799
 CDI MAJOR IMPACT 280H x BBS TRUE JUSTICE B10

Video Sale at 1:00 PM
At The Farm 2 miles south
of Frederick, SD
 10904 387th Ave., Frederick, SD 57441

75 BULLS & 10 FANCY
OPENS SELL 2/21!

LARGEST
PUREBRED
SIMMENTAL
OFFERING IN
THE U.S.A.

This sale will be broadcast live on the internet! **DVAuction**
 Broadcasting Real-Time Auctions

HART SIMMENTALS

Kerry, Mara, Justin, Jes & Jamie • 4hooves@nvc.net
 JUSTIN 605-216-6469 • KERRY 605-252-2065

Sale Managed by:

 ENTERPRISES INC. sales@ebersale.com
 Follow our Facebook page for sale updates!

VIEW FULL SALE OFFERING ONLINE AT
WWW.EBERSALE.COM



HART BLACK GOLD 016L

4205151 - HOMO BLACK, HOMO POLLED
 BW - 83 ADJ WW - 865
 ES SOLID GOLD JG157 x QB LAST FRONTIER F42



HART FULL FORCE 072L

4204980 - HOMO BLACK, HOMO POLLED
 BW - 87 ADJ WW - 859
 LHT MAIN FORCE 184G x HART MEGA WATTS 019C



HART WISH UPON A STAR 244L

4204978 - HOMO BLACK, HOMO POLLED
 BW - 83 ADJ WW - 695
 CDI MAJOR IMPACT 280H x CDI MADE RIGHT 353B

PROFIT-ORIENTED GENETICS AT WORK.

COMBINING GENETICS, GENOMICS AND
PHENOTYPE FOR HEAVIER CALVES WITHOUT
SACRIFICING YOUR REPLACEMENT PEN.

ANNUAL GENETICS WITH VISION

PRODUCTION SALE • FEBRUARY 10, 2024

OFFERING YEARLING & 18-MONTH-OLD BULLS, BRED AND OPEN FEMALES



WS ELECTRA E88

PUREBRED SIMMENTAL | ASA# 3254157

CDI VERDICT 220Y x ER BIG SKY 545B

OWNED WITH KELLER BROKEN HEART RANCH



KBHR MEDORA G132

PUREBRED SIMMENTAL | ASA# 3618751

KBHR HIGH ROAD E283 x WS HOT BEEF X38

OWNED BY KELLER BROKEN HEART RANCH

OFFERING PROGENY BY THESE ELITE DONORS!



JC MR PONTIAC D114K

3/4 SIMMENTAL 1/2 ANGUS | ASA# 4029546
GIBBS 9114G ESSENTIAL x GIBBS 4475B PIRATE
OWNED WITH COW CAMP RANCH

SELLING BRED HEIFERS CARRYING THE FIRST
CALVES BY THIS EXCITING OUTCROSS SIRE!

MATERNAL + CARCASS

TOP 2% API - TI TOP 5% MCE - Stay - REA - SHR



KBHR GLOBAL J138

PUREBRED SIMMENTAL | ASA# 3943850
WS PROCLAMATION E202 x WS HOT BEEF X38
OWNED WITH WOONALLEE, ALL BF, AND
KELLER BROKEN HEART RANCH

ACE CERTIFIED CALVING EASE SIRE,
EXCELLENT DISPOSITION, GREAT PERFORMANCE

GROWTH + PERFORMANCE

TOP 1% MCE - Stay - Marb - API TOP 5% CE - Doc - TI



WS GADGET 40G

PUREBRED SIMMENTAL | ASA# 3587940
KBHR SNIPER E036 x WS EMOTION E127

SELLING PROGENY BY THIS DARK RED, OUTCROSS
SIRE THAT EXCEL IN CALVING EASE AND GROWTH!

GROWTH + PERFORMANCE

TOP 2% CE - WW - YW - MCE - MWW - DOC - CW - TI



VISIT OUR WEBSITE TO JOIN OUR MAILING LIST TODAY
47499 199th Ave, Clearbrook, MN 56634 | rydeen@gvtel.com
Paul: 218-280-1916 | Justis: 218-280-2032 | Rydeen Farms



BID ONLINE! **DVAuction**
Specializing Real Time Auctions

WWW.RYDEENFARMS.COM

Rydeen Farms
SINCE 1897
Polled Red & Black Simmental Cattle

"SOME OLD-FASHIONED
THINGS, LIKE FRESH
AIR AND SUNSHINE,
ARE HARD TO BEAT."

- Laura Ingalls Wilder



ND Simmental Classic Sale

Kist Livestock, Mandan, ND -December 9, 2023

Auctioneer: Tracy Harl

Sale Manager: Thomas Livestock Services

Sale Report Provided by Kirby Goettsch,
Farm and Ranch Guide

33 Bred Heifers Average.....	\$4,758
20 Open Heifers Average.....	\$3,472
1 Pick of Herd.....	\$8,000
8 ET Lots Average.....	\$1,744

TOP SELLING PICK:

Lot 2: \$8,000, Pick of the 2022 Quandt Brothers Cattle Co., Oakes, ND sold to Double J Farms, Sherman, SD

TOP SELLING BRED HEIFERS:

Lot 23: \$8,500, HSR MS Falcon K491, April 8, 2022, LRS Falcon 442G x KOCH Big Timber 685D, sold bred to Ellingson Badlands 0285, consigned by Hansen Simmental Ranch, Ryder, ND, sold to Adams Ranch, Sheridan, WY

Lot 7: \$7,500, BBS Kamryn K241, March 8, 2022, TRAX Red River E84 x WFL Mr Westway 50X, sold bred to WS 38 Special 20H, consigned by Bata Brothers, Adams, ND, sold to Ethan Staigle, Center, ND

Lot 13: \$7,000, DCR MS Riddler K350, March 7, 2022, LFE The Riddler 323B x Sunny Valley Summit 35B, sold bred to Bridle Bit Resource G9117, consigned by Doll Farm Enterprise, New Salem, ND, sold to Emery Ranch, Frederick, SD

TOP SELLING OPEN HEIFER:

Lot 48: \$6,000, DSR Red Allure L301, March 18, 2023, Rockin H Captivate J75 x DSR Beef Maker X511, consigned by Deckert Simmental Ranch, Arena, ND, sold to Nick Bastian, Roosevelt, UT

South Dakota Source Sale

Hosted by SC Online Sales - December 15, 2023

Sale report provided by Brett Tostenson

Open Heifers Average.....	\$3095
Bred Heifers Average.....	\$4437
Embryos Average	\$481
Semen Average	\$154

TOP SELLING LOTS:

W/C Angel 3479L.....\$8000

Seller: Werning Cattle Co., Emery, SD

Buyer: Casey McMurphy, Canyon, TX

Pick of the 2023 Open Heifers at R&R Cattle.....\$7500

Seller: R&R Cattle Co., Chamberlain, SD

Buyer: Jared Barr, West Plains, MO

ROLR Ms Epic 37K.....\$6750

Seller: Roller Ranch, Hewitt, MN

Buyer: Sheridan Sweet, Beresford, SD

ROLR Ms Lincoln 36K.....\$4750

Seller: Roller Ranch, Hewitt, MN

Buyer: Jim Effling, Clear Lake, SD

WOLL Miss Home Run K20.....\$4500

Seller: Wollmuth Ranch, Moffit, ND

Buyer: Chris Heim, Wessington Springs, SD

Bramlets/C4 Alley J193.....\$4500

Seller: Van Roekel Cattle, Larchwood, IA

Buyer: Jim Riggs, Merrimac, WI

ADVERTISER'S INDEX

3C Christensen Ranch.....	38
Bata Brothers Simmentals.....	36-37
Begger's Diamond V Ranch	54
Bell Simmentals.....	36
Benda Ranch	21
Brink Simmentals.....	45
CK Cattle	IFC
Dakota XPress Simmental Group	27
Deckert Simmental Ranch.....	39
Diamond M Cattle Company.....	33
Double J Farms	5
Double T Simmental.....	IBC
Edge of the West	30
Eichacker Simmentals	55
Ekstrum Simmentals	31
Ellingson Simmentals.....	17
First Defense	58
Goeken Cattle	13
Hansen Simmental Ranch	27

Hart Simmentals	60
Hoiby Simmental	29
ImmuCell.....	58
Innovation AgMarketing, LLC.....	IFC
Kaelberer Ranch	30
Keller Broken Heart Ranch.....	6-7
Kenner Simmentals.....	BC
Kinn Simmentals	30
Klain Simmental Ranch.....	35
Kline Simmental Ranch.....	15
Koepplin's Black Simmentals.....	53
Kunkel Simmental Ranch.....	43
LaBatte Simmentals	32
Lazy C Diamond Ranch	48
Lewis Farms.....	23
Mandan Lake Simmentals.....	27
NLC Simmental Ranch	38
Premium Beef Bull Sale	65
Quandt Cattle Co.....	59

R&R Cattle Company	19
Rendevous Farms	66
Rydeen Farms	61
S/M Fleckvieh Cattle	11
Schnabel Ranch Simmentals.....	10
Solsaa Angus	9
SRF Simmentals.....	30
Stavick Simmental	49
Sys Simmentals.....	25
Thyen Simmentals	9
TNT Simmentals	47
Transcon Livestock Corporation.....	64
Traxinger Simmentals	57
Triple H Simmentals	63
TSN Simmentals	51
Wager Cattle	IFC
Wheatland Cattle Company	40-41
Wheatland Mickelson	40-41
Wilkinson Farms Simmentals	44

DAKOTA POWER

Selling
50 BULLS & 25 BRED HEIFERS

VIDEO AUCTION AT THE
HANNAFORD MERCANTILE

SIMGENETIC BULL & FEMALE SALE

VIEW VIDEOS & BID ONLINE
THROUGH DVAUCTION

2.12.24

THSR CAPTIVATE L3017



3/4 SM 1/4 AR | ASA #: 4267676 | ADJ. BW: 87 | ADJ. WW: 780
ROCKIN H CAPTIVATE J75 X THSR MS OUT IN FRONT F810 | CE: 15.4 | BW: -1
WW: 84.9 | YW: 128.5 | MCE: 9.2 | MILK: 28.4 | MWW: 70.6 | API: 120.6 | TI: 82

THSR SNIPER L3004



3/4 SM 1/4 AR | ASA #: 4267633 | ADJ. BW: 73 | ADJ. WW: 754
KBHR SNIPER E036 X THSR MS RED RIVER J123 | CE: 18 | BW: -2.3
WW: 88.2 | YW: 142.5 | MCE: 11 | MILK: 25.7 | MWW: 69.6 | API: 146.8 | TI: 89.1

THSR RAW HIDE L3012



1/2 SM 1/2 AN | ASA #: 4267744 | ADJ. BW: 75 | ADJ. WW: 770
POSS RAWHIDE X THSR MS SLAM D698 | CE: 10.3 | BW: 0.7
WW: 86.2 | YW: 141.9 | MCE: 8.5 | MILK: 32.8 | MWW: 76.6 | API: 149.3 | TI: 91

THSR FAVOR L3070



PB SIMM | ASA #: 4267740 | ADJ. BW: 96 | ADJ. WW: 803
LCOR FAVOR 149F X KS MS PROGRESSIVE G417 | CE: 9.8 | BW: 1.4
WW: 94.8 | YW: 142.2 | MCE: 4 | MILK: 24.3 | MWW: 71.3 | API: 148 | TI: 89.5

THSR HUSTLER L3093



PB SIMM | ASA #: 4267730 | ADJ. BW: 91 | ADJ. WW: 844
RFS HUSTLER H82 X THSR MS SLAM 760E | CE: 8.8 | BW: 4.5
WW: 96.2 | YW: 156.1 | MCE: 5.8 | MILK: 26.4 | MWW: 74.2 | API: 132.8 | TI: 87.8

THSR ZUMBRO L3112



3/4 SM 1/4 AN | ASA #: 4267670 | ADJ. BW: 102 | ADJ. WW: 824
BBS ZUMBRO H95 X THSR MS ICONIC G906 | CE: 6.8 | BW: 4.3
WW: 90.8 | YW: 144.2 | MCE: 5.6 | MILK: 31.9 | MWW: 77.1 | API: 103.8 | TI: 72

THSR KONG L3208



5/8 SM 3/8 AN | ASA #: 4267717 | ADJ. BW: 101 | ADJ. WW: 776
THSR KONG F848 X THSR MS SINGLETARY B460 | CE: 11.6 | BW: 1.8
WW: 89.4 | YW: 142.9 | MCE: 7.8 | MILK: 30.8 | MWW: 75.5 | API: 133.5 | TI: 84.7

REQUEST YOUR
CATALOG TODAY!



TRIPLE H SIMMENTALS
KELLY & BRYAN HANSON 701-789-1391 or 701-789-0655
11010 County Road 26 Hannaford, ND 58448
WWW.TRIPLEHSIMMENTALS.COM

SINCE 1967



FEBRUARY 2024

Saturday, February 10
Monday, February 19
Friday, February 23
Saturday, February 24
Monday, February 26
Wednesday, February 28

JNR Farms Bull & Female Sale
Rendezvous Farms 20th Annual Holiday Monday Simmental Bull & Female Sale
Lone Stone Farms Simmental & Red Angus Bull Sale
Tri K Cattle Bull & Heifer Sale (w/Albrecht Farms)
Beechinor Bros. Simmentals & Guests Bull & Heifer Sale
Spring Lake Simmentals, The Zimmers - Bull Sale

Willingdon, AB
Ste Rose du Lac, MB
Westlock, AB
Beaverlodge, AB
Bentley, AB
Daysland, AB

MARCH/APRIL 2024

Friday, March 1
Saturday, March 2
Monday, March 4
Wednesday, March 6
Thursday, March 7
Saturday, March 9
Monday, March 11
Thursday, March 14
Friday, March 15
Saturday, March 16
Sunday, March 17
Thursday, March 21
Monday, March 25
Wednesday, March 27
Saturday, March 30
Wednesday, April 3
Friday, April 5
Monday, April 8

LaBatte Simmentals 44th Annual Bull & Female Sale
Bridge City Simmental Bull & Female Sale
Virginia Ranch / Skywest Simmentals Bull & Heifer Sale
20th Annual Swantewitt & Sage Simmentals Bull & Heifer Sale
Transcon's 6th Annual Next Step Bull Sale
Transcon's Red Deer County Bull Sale
11th Annual North Country Ranchland Simmental Bull Sale
Northern Light Simmentals Bull Sale
High Bluff Stock Farms Charolais & Simmental Bull Sale
McRuer Simmentals & Guests Bull & Heifer Sale
Transcon's Premium Beef Simmental Bull Sale
Janzen Ranches 31st Annual Simmental & Red Angus Bull Sale
Southwest Showcase Simmental Bull Sale
Camden Cattle Co. 12th Annual Bull & Female Sale with Niwa Ranching Co.
Transcon's 29th Annual Advantage Bull Sale
Transcon's Northern Connection Simmental Bull Sale
Transcon's Peace Country Simmental Bull Sale
Springtime Alliance Charolais, Maine-Anjou and Simmental Bull Sale

Moose Jaw, SK
Saskatoon, SK
Innisfail, AB
Shiningbank Lake, AB
Thorsby, AB
Innisfail, AB
Dawson Creek, BC
Rossburn, MB
Inglis, MB
Killarney, MB
Neepawa, MB
Rosemary, AB
Swift Current, SK
New Brigid, AB
Saskatoon, SK
St. Paul, AB
Beaverlodge, AB
Candiac, SK

*Our Team...
Always Working
For You!*



Head Office
Box 300
Sundre, AB T0M 1X0
403-638-9377

Field Office
Box 1944
Minnedosa, MB R0J 1E0
403-638-7741



Jay Good
25+ years Transcon Team
Tel: 403-556-5563



Glenn Norton
14-years Transcon Team
Tel: 780-542-0643



Darren Paget
11-years Transcon Team
Tel: 403-323-3985



Cody Coupland
3-years Transcon Team
Tel: 403-877-0799

★ ★ ★ ★ ★

PREMIUM Beef

BULL & FEMALE SALE

March **3** 2024

At Ag-Land Farms | Kenton, MB

BOHRSON
MARKETING SERVICES



DMJ 60L - Selling in Premium Beef 2024
SVS Tycoon 841F x R Plus Venom 4006B



NRD 68K - Selling in Premium Beef 2024
SRH Hannibal 5H x Harvie JDF Wallbanger 111X



SBSF 13K High Selling "SVS Betts 808F" Bull
sold to Murray Sheane for \$10,000.00



DMJ 52L - Selling in Premium Beef 2024
SRH Hannibal 5H x LFE The Riddler 323B



NRD 28L - Selling in Premium Beef 2024
Mader Son of Anarchy 144F x Wheatland Bull 786T



IPU 190A Sire of all the "Betts" bulls in the
2024 Premium Beef Bull Sale

AG-LAND FARMS

Dana, Megan & Terron Johns

Dana 204.365.7149

Greg & Allyson Workman

Greg 204.724.0564

BERT'S NR SIMMENTALS

Norbert, Pam, Sam, & Nathan de Rocquigny

Norbert 204.745.7930

MCCOLL SIMMENTALS

SCHWEITZER SIMMENTALS

Brodie, Stacey, Kolbie & Sierra McColl

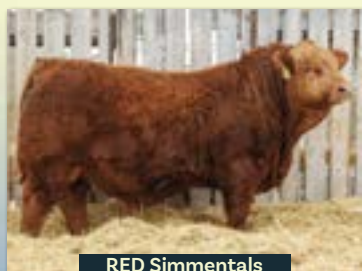
Brodie 306.452.8558

Cam & Myrna Schweitzer

Cam 204.365.6092 **Myrna** 204.365.7307



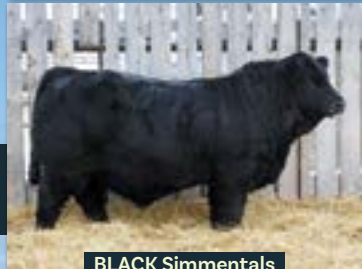
"HOLIDAY MONDAY"
SIMMENTAL BULL AND FEMALE SALE
MONDAY, FEBRUARY 19, 2024
1 PM CDT | AT THE FARM | STE. ROSE, MB



RED Simmentals



FULLBLOOD Simmentals



BLACK Simmentals

135 BULLS
50 HEIFERS



RED, BLACK & FULLBLOOD
 Simmental Heifers



BID ONLINE
AT DLMS.CA

THANK YOU TO OUR
VALUED CUSTOMERS

that purchased cattle in last year's sale.

**We are truly humbled by your
 continued faith in our program!**

SPEAR W RANCH, MN
 HELGOE SIMMENTALS, ND
 CHASE TRAUTMAN, ND
 HELGOE SIMMENTALS, ND
 DANIEL DOCKTER, ND
 BUELIGEN RANCH, ND
 ERICK ROSENAU, ND
 GLEN, MELINDA & LEON ALDENTALER, SD
 HAMAN RANCH, ND
 JOHN ROHDE, ND
 ABRAHAM FARMS, SD
 NICK STORMO, SD
 MCKIMMEY CATTLE COMPANY, NE
 CROSS S SIMMENTALS, ND
 S&A FRERICKS INC., SD
 T&M FARMS LLC, SD
 TRAVIS BURGARD, ND
 TREVOR VANDERHOVEN, ND
 MANDAN LAKE SIMMENTAL, ND



Jay Good: (403)556-5563 Darren Paget: (403)323-3985
 Glenn Norton: (780)542-0634 Cody Coupland: (403)877-0799

CATALOG ONLINE @ www.transconlivestock.com

Dave Maguet
 204-447-7573



Gerald Maguet

Rendezvous Farms
rendezvousfarms@hotmail.com

Profit

Our philosophy is simple:

Annual Production Sale Feb. 17, 2024

At the Ranch, Turtle Lake

45 RED & BLACK SIMMENTAL &
SIMINFLUENCED YEARLING BULLS

20 OPEN FEMALES & THE ELITE EIGHT:
4 ELITE BREDS, 4 ELITE OPENS

10 BRED FEMALES, RED & BLACK
BRED FOR PROFIT!

We have and will continue to breed cattle with calving ease, while maintaining reasonable and sensible growth. We select females that are moderate in size that will survive and produce in our unpredictable and harsh environment. In the commercial cow/calf business there must be a continued focus on the expense and maintenance of the cow herd. Profitability is not determined by income only, but a balanced approach of inputs and income.



Tattoo: 051L • ASA # 4203351 • $\frac{3}{4}$ SM
LBRS Dakota Pride X MGR Treasure



Tattoo: 637L • ASA # 4203385 • PB SM
SRF Major Move X Red Zone



Tattoo: 104L • ASA # 4203352 • $\frac{1}{2}$ SM
Tahoe X CLRS Dividend



Tattoo: 723L • ASA # 4203455 • PB SM
Red Empire X Miss Versace



Tattoo: 913L • ASA # 4203453 • $\frac{1}{2}$ SM
Tahoe X Eight Ball



Tattoo: 869L • ASA # 4203314 • $\frac{3}{4}$ blood
CLRS Jackpot X Beacon • Complete outcross red



TIM & TAM CLARK • TURTLE LAKE, ND

Ranch: (701) 448-2815 • Tim Cell: (701) 799-7752 • Tam Cell: (701) 315-0032

www.DoubleTSimmentals.com

28TH ANNUAL PRODUCTION SALE
FEBRUARY 10, 2024 1:00 PM CST / AT THE RANCH / LEEDS, ND
Selling 120 Bulls & 65 Bred Heifers / Black & Red - Purebred, SimAngus & Red Angus

NO EXTREMES

COMMITTED TO

Balance

WE PRIORITIZE FINDING THE BALANCE
BETWEEN DATA & PHENOTYPE FOR GENETICS
THAT WILL IMPROVE YOUR BOTTOM LINE.



L145 - PB SM

KBHR Global x KS Brinley B33

EPDs 14 0.9 82 120 10 32 73 API 142 TI 86



L202B - PB SM

GW Hilger One x KS Robin Hood

EPDs 7 3.9 109 174 3 29 83 API 145 TI 98



L484 - 3/4 SM

KS Dutton x LRS Crossroads

EPDs 9 2.5 81 122 5 27 67 API 121 TI 75



L414 - 1/2 SM

WL Accomplishment 053 x Hook's Bozeman

EPDs 11 -0.3 68 110 7 30 72 API 132 TI 76



L505 - PB AR

STRA Admiral x ALC Mr Right Kind

EPDs 14 0.2 85 123 10 23 65 API 135 TI 84



K452 - 3/4 SM

KS Reggie x LRS Emil

EPDs 10 1.2 71 108 6 32 67 API 131 TI 76

AI Bred to Colorado Bridle Bit

ENTER TO WIN!

Visit the farm to view the sale
offering from December 1st through
February 9th to be entered to win a
\$500 SALE CREDIT to be used
at our 2024 production sale!

12/16/23 EPDs: CE BW WW YW MCE Milk MWW API TI



Roger, Jeanette & Erika Kenner / 5606 57th St NE Leeds, ND 58346
Erika 406-581-1188 / Roger 701-466-2800
Herdsmen, Bryan Leapoldt 701-466-2553 • C. 701-739-8764
erika.kenner@gmail.com

WWW.KENNERSIMMENTAL.COM

DVAuction Videos Online DVAuctions by Mid-January

